

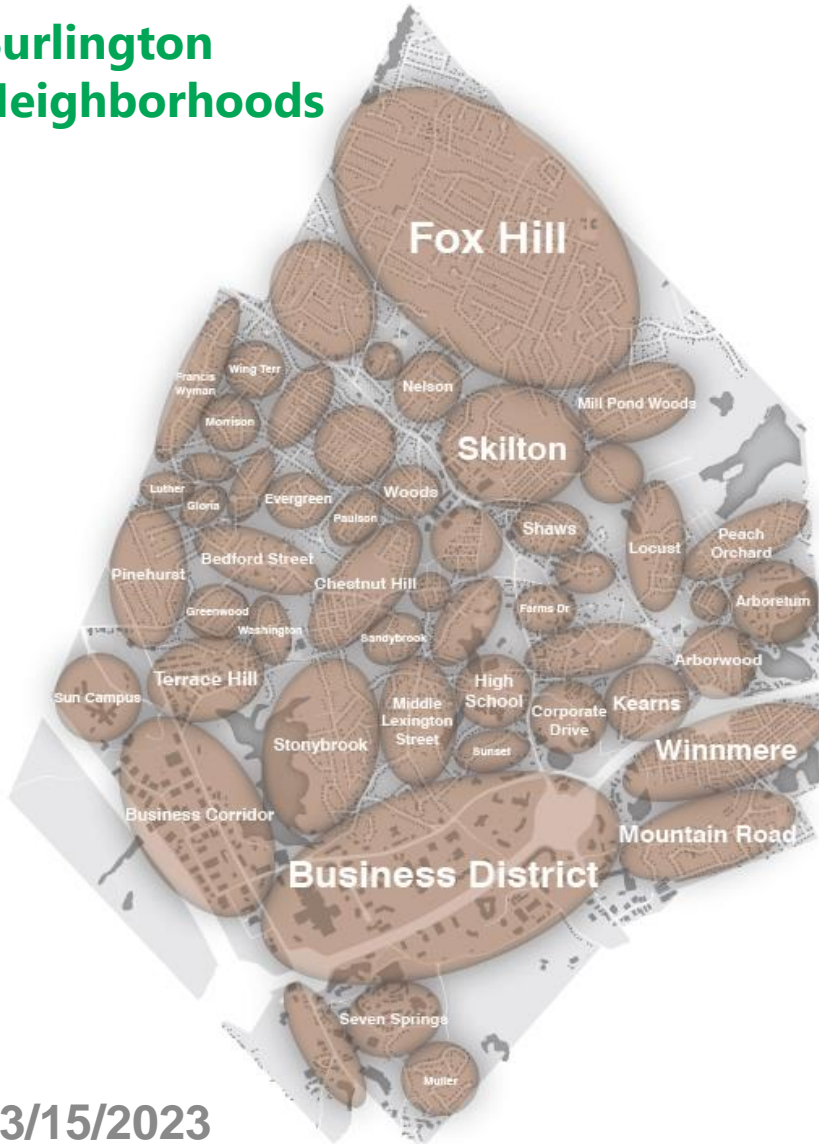


Burlington Supply Initiative Virtual Small Group Project Review Session

March 15, 2023

Topic	Est. Duration
Housekeeping and Welcome	5 mins
Goals	5 mins
Project Overview & Enclosure Renderings	10 mins
Discussion and Q&A	30 mins
Wrap Up & Next Steps	5 mins

Burlington Neighborhoods



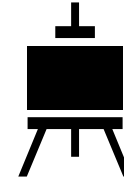
3/15/2023

Session purpose...

- **Review the Project need** history & possible solution.
- Examine the **substation enclosure design**.

We are asking you for...

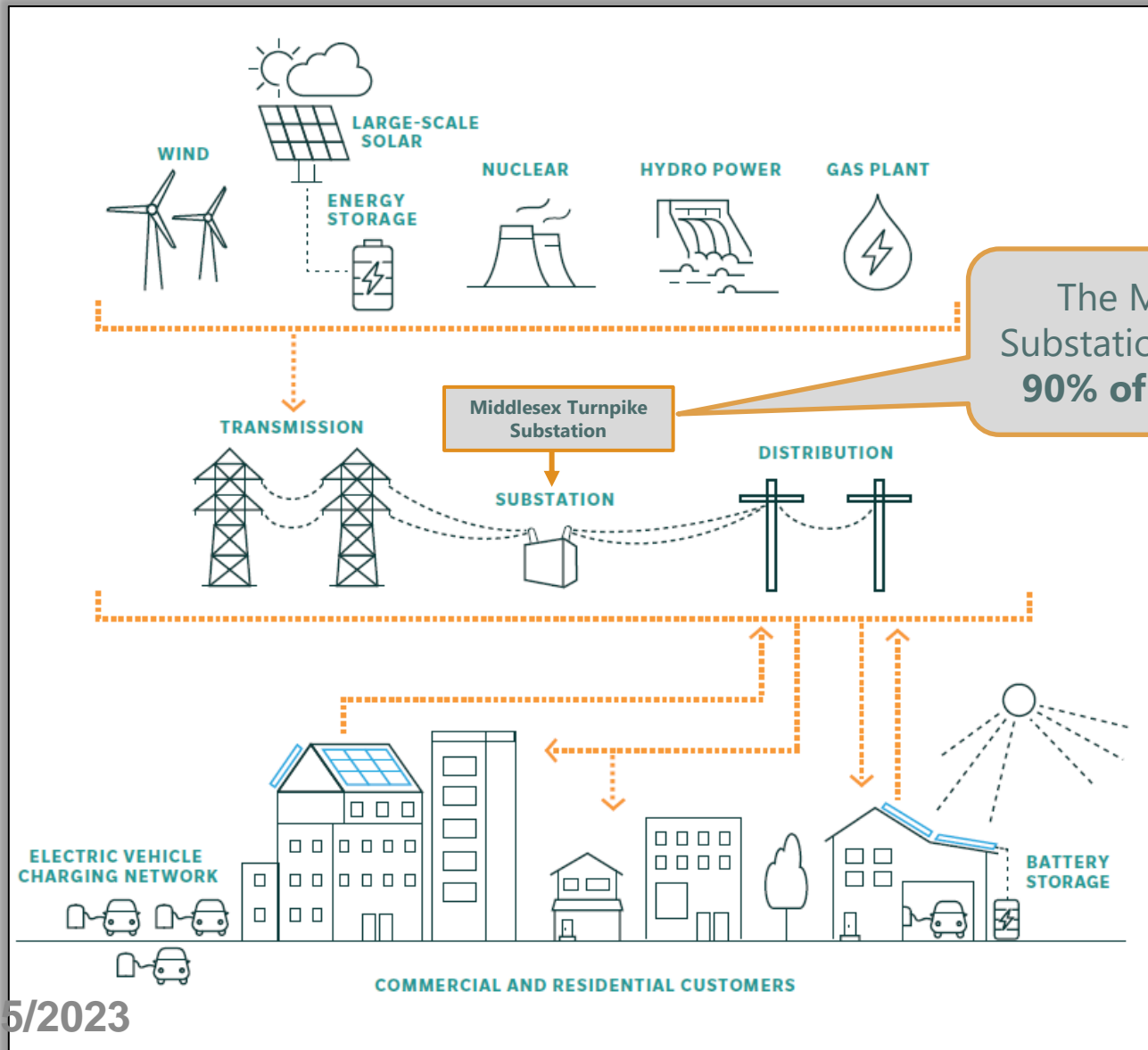
- **Input** on the proposed enclosure design.
- **Suggestions** on how to solicit input.
- **Support** in engaging the broader public.



<p>Step 1: Municipal feedback, location selection and initial engineering.</p>	<p>Step 2: Feedback from stakeholders on the substation enclosure.</p>	<p>Step 3: Broad public outreach through open houses, pop-up events, etc.</p>	<p>Step 4: Final enclosure design based on iterative community input.</p>	<p>Step 5: State and local filings to receive all necessary permits and approvals.</p>
<p>Completed with the process starting in early '21.</p>	<p>Ongoing in March and April '23</p>	<p>Expected to start May/June '23.</p>	<p>Expected in late '23 or early '24.</p>	<p>Expected in late '24 or early '25.</p>

The Burlington Supply Initiative

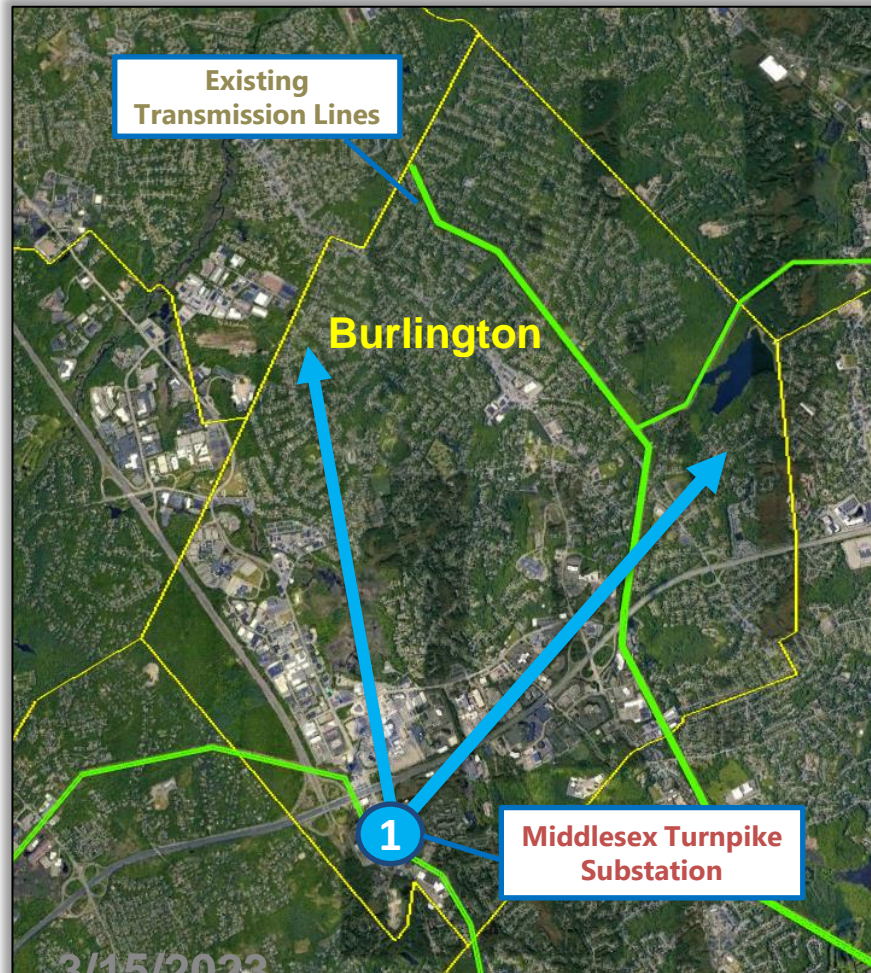
Meeting growing customer demand & improving reliability



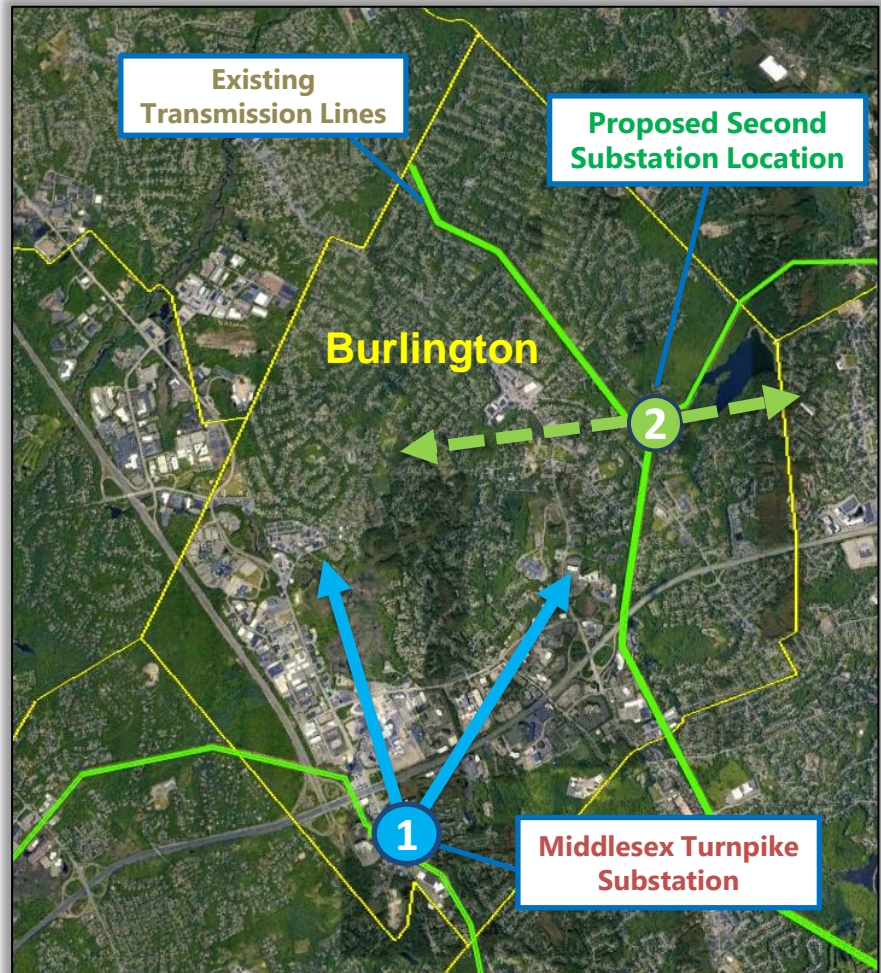
Existing Source of Power Has Reliability Risks

Current Concern: Existing heavy load in Burlington.

Most of Burlington is dependent on the existing substation which cannot support future growth.



Future Proposed Solution: Shared loading with two substations. Once built the second substation will provide enhanced reliability and capacity.



Substation Site Selection Process

Balance several factors when reviewing potential sites

KEY

- Transmission Lines (power source)
- Transmission Lines (new power source)
- New Substation Area of Interest



Existing Middlesex Turnpike Substation

New Substation Area of Interest

Preferred New Substation Location

Parcels on Eversource property near Locust Street

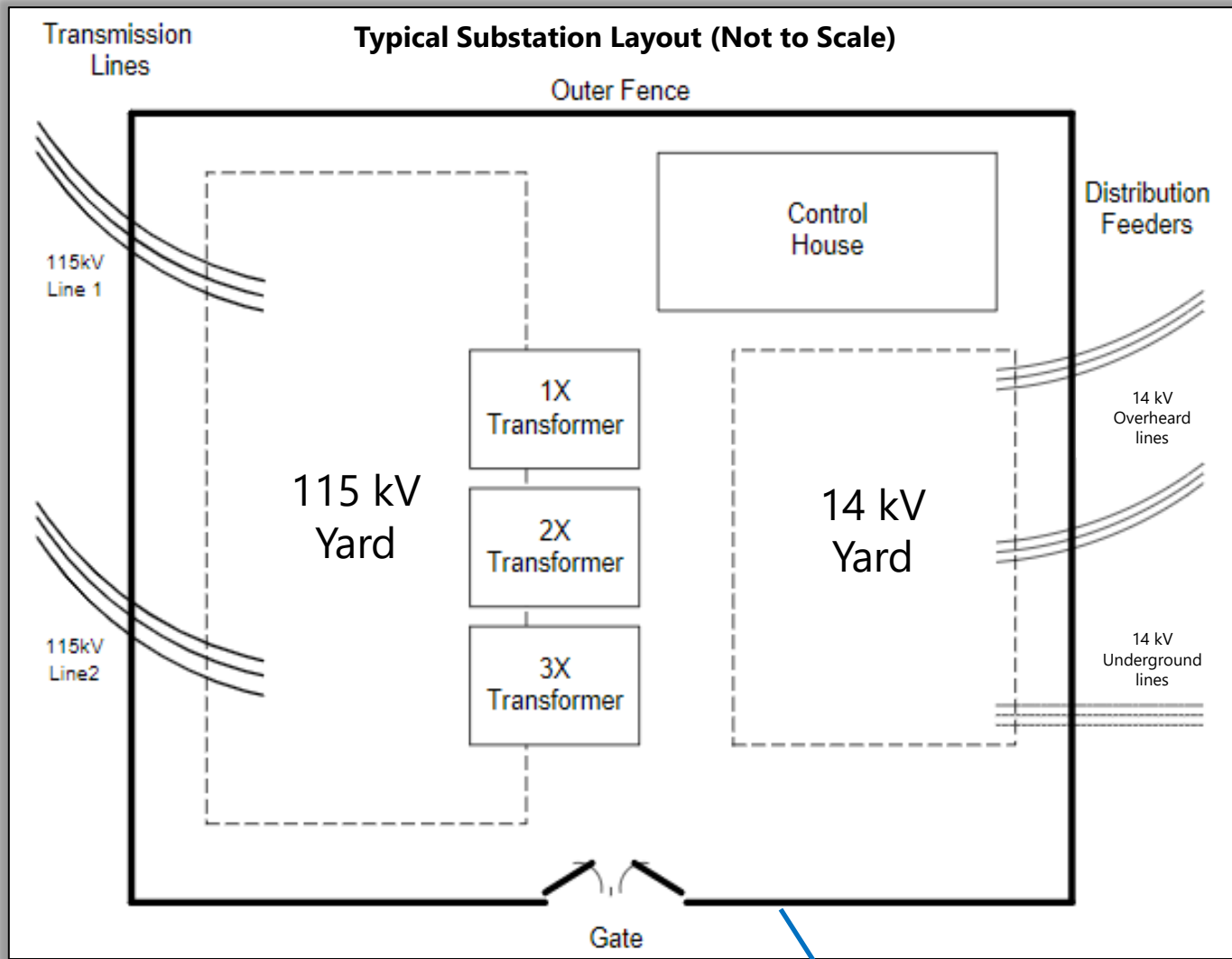
Location benefits: large enough, limited in-street excavation, reduces project costs & existing access.



3/15/2023

KEY

- Transmission Lines (power source)
- Substation Boundary
- Eversource Property



Enclosure Safety & Security Standards

- **No closer than 25 ft.** to any 115-kV (kilovolt) substation structure & **no closer than 40 ft.** to any 345-kV substation structure.
- **Vegetation must be at least 33 ft. away** from the enclosure. Vegetation must not be climbable.
- **Fencing should not be closer than 3 ft. to the property line & height at least 8 ft. above grade.** A 15 ft. enclosure is proposed to shield views of the equipment.

We need feedback to the perimeter enclosure.

*Proposed Project Activity Timeline

Feedback from the community & local/state officials throughout

Activity	Timeline	Progress
Outreach to the community	2022-2028	On-going
Engineering scope development & design	2023-2024	On-going
Obtain permits & approvals	2024-2026	Planning
Construction, testing & operation	2026-2028	Planning

**Milestones subject to change based on unforeseen conditions.*

Information for the Public

- 1-833-836-0302
- ProjectInfoMa@eversource.com
- Visit <https://bit.ly/ESBurl> or scan the code to **join the mailing list.**



New Burlington Substation Visualization

Proposed Site Layout



Visuals are for informational purposes only and a rendering. All trees, houses, etc. may not be to scale.

3/15/2023

New Burlington Substation Visualization

Proposed Site Layout View Locations



Visuals are for informational purposes only and a rendering. All trees, houses, etc. may not be to scale.

3/15/2023

New Burlington Substation Visualization

Solid Panel Fence View



Visuals are for informational purposes only and a rendering. All trees, houses, etc. may not be to scale.

3/15/2023

New Burlington Substation Visualization

Solid Panel Fence View 2

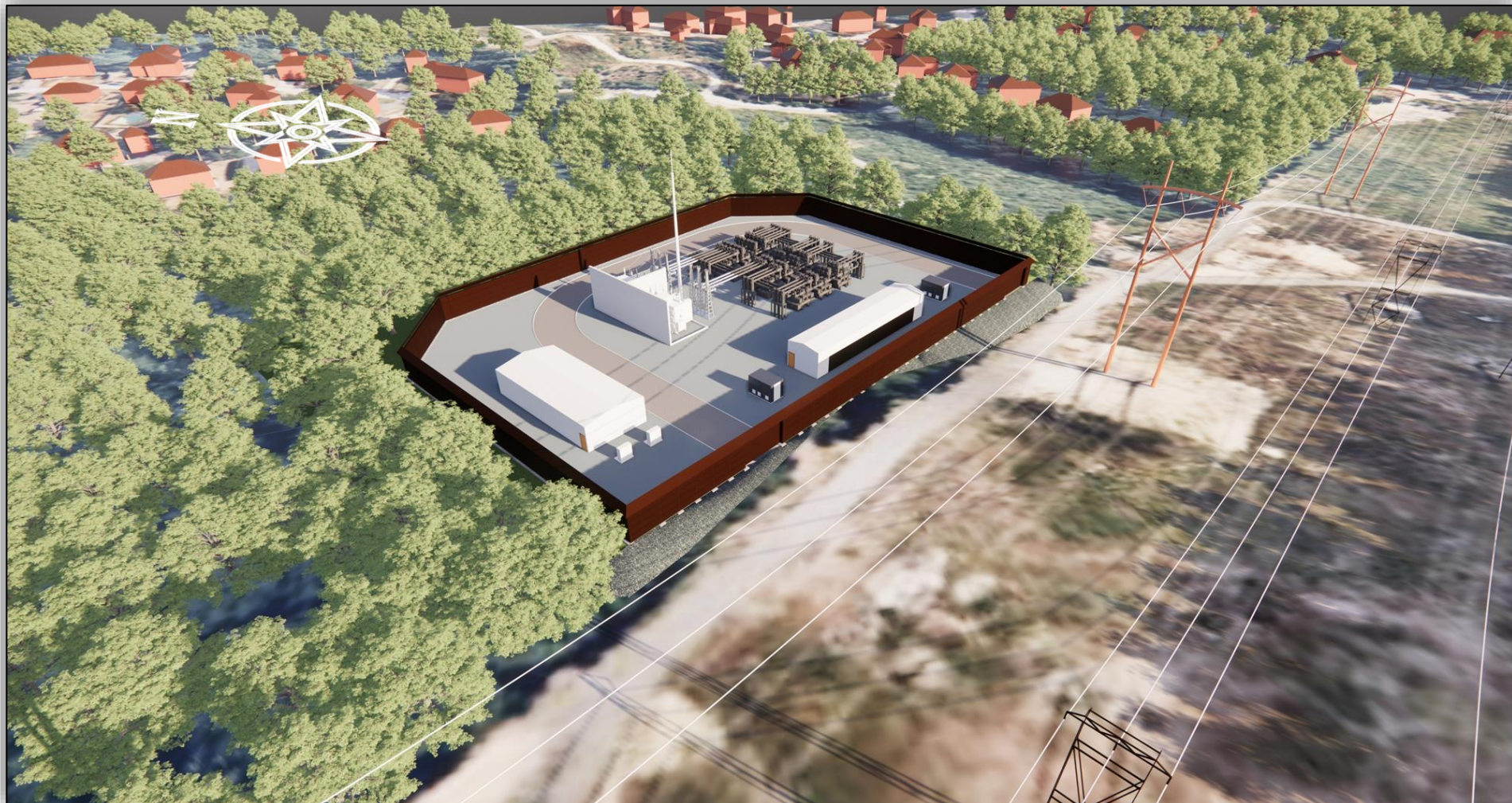


Visuals are for informational purposes only and a rendering. All trees, houses, etc. may not be to scale.

3/15/2023

New Burlington Substation Visualization

Solid Panel Fence View 3

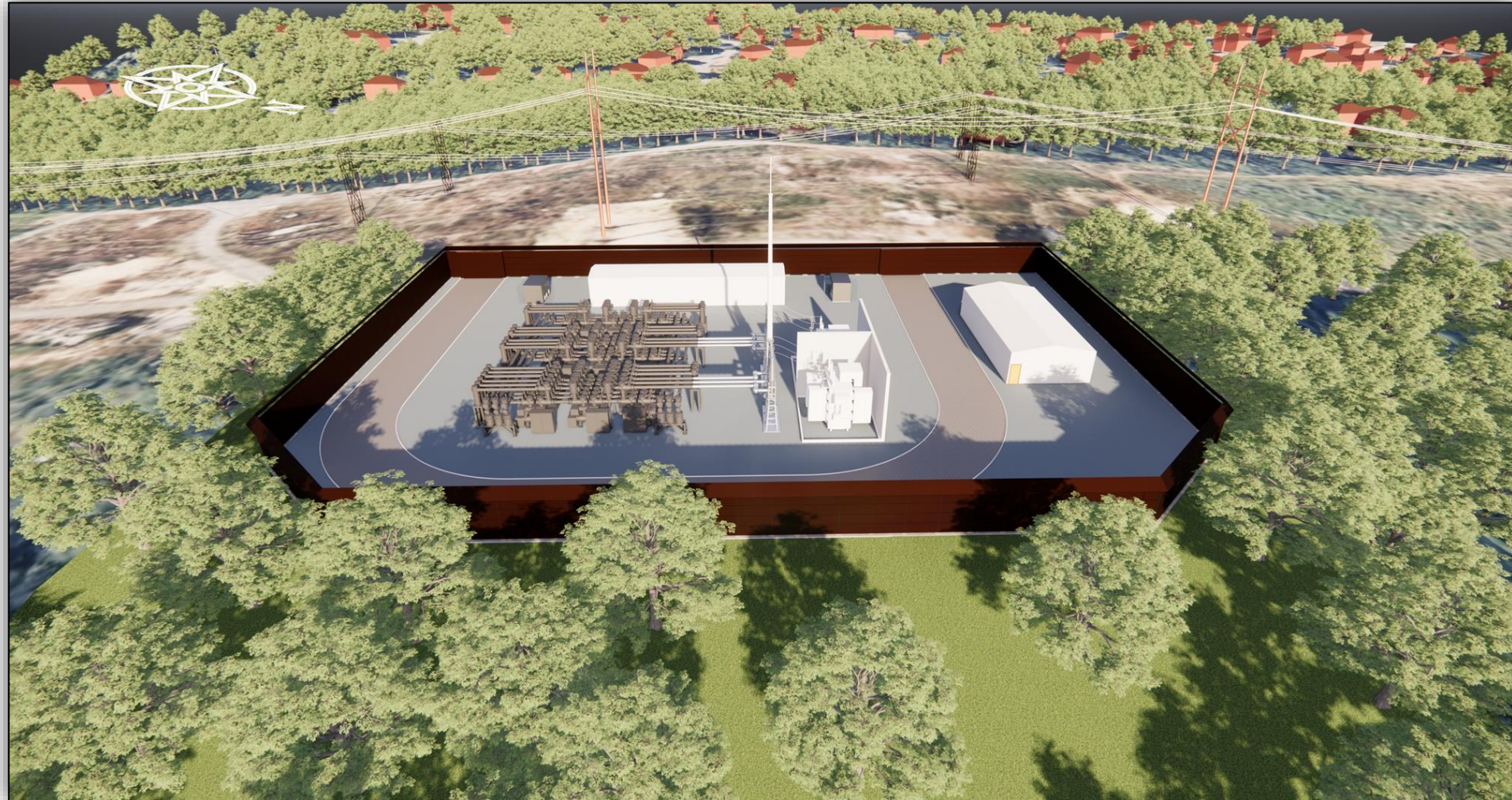


Visuals are for informational purposes only and a rendering. All trees, houses, etc. may not be to scale.

3/15/2023

New Burlington Substation Visualization

Solid Panel Fence View 4



Visuals are for informational purposes only and a rendering. All trees, houses, etc. may not be to scale.

3/15/2023

New Burlington Substation Visualization

View From Area A (Pearson Circle), Looking East

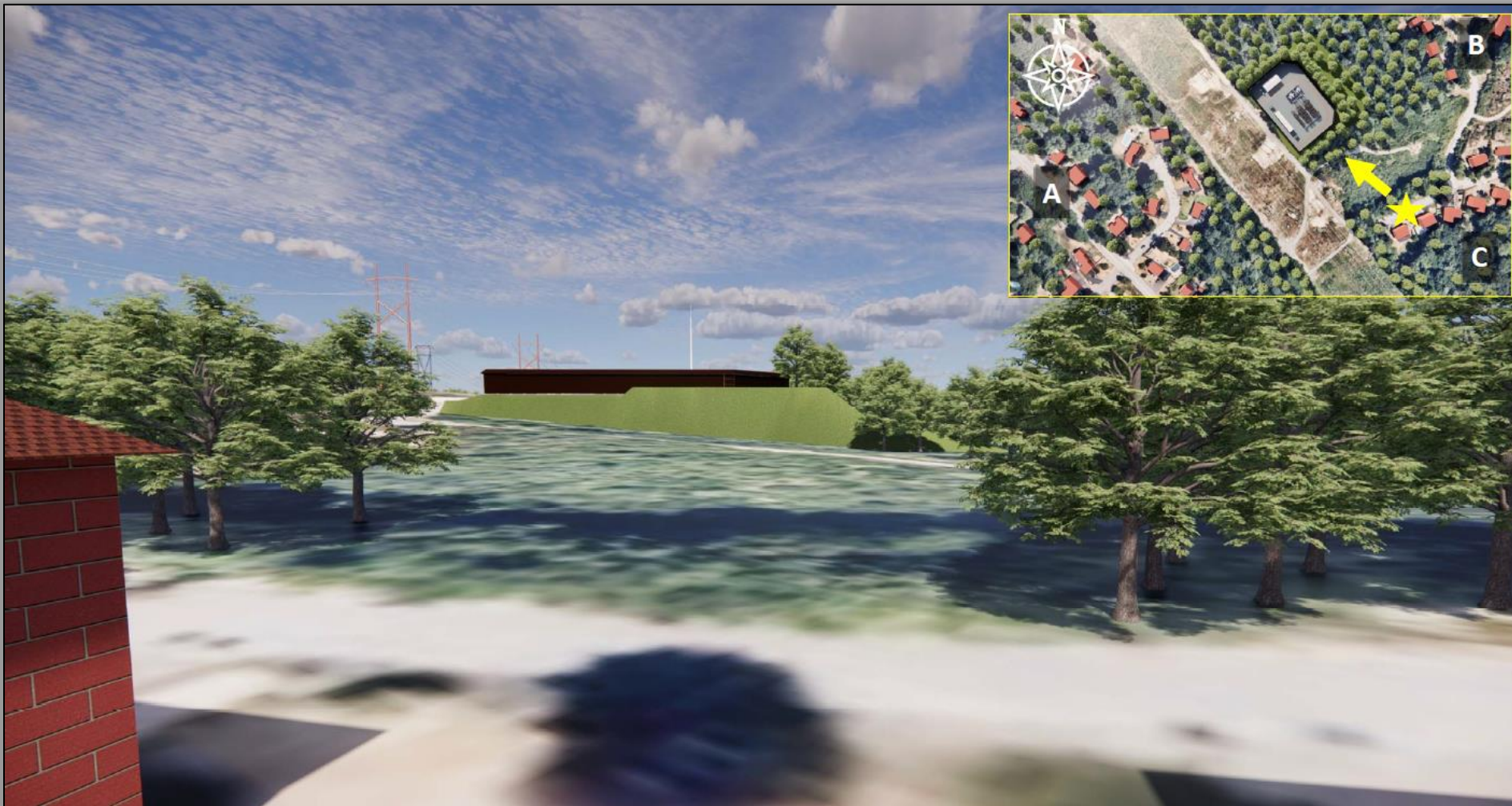


Visuals are for informational purposes only and a rendering. All trees, houses, etc. may not be to scale.

3/15/2023

New Burlington Substation Visualization

View From Area C (Cierra Way), Looking Northwest

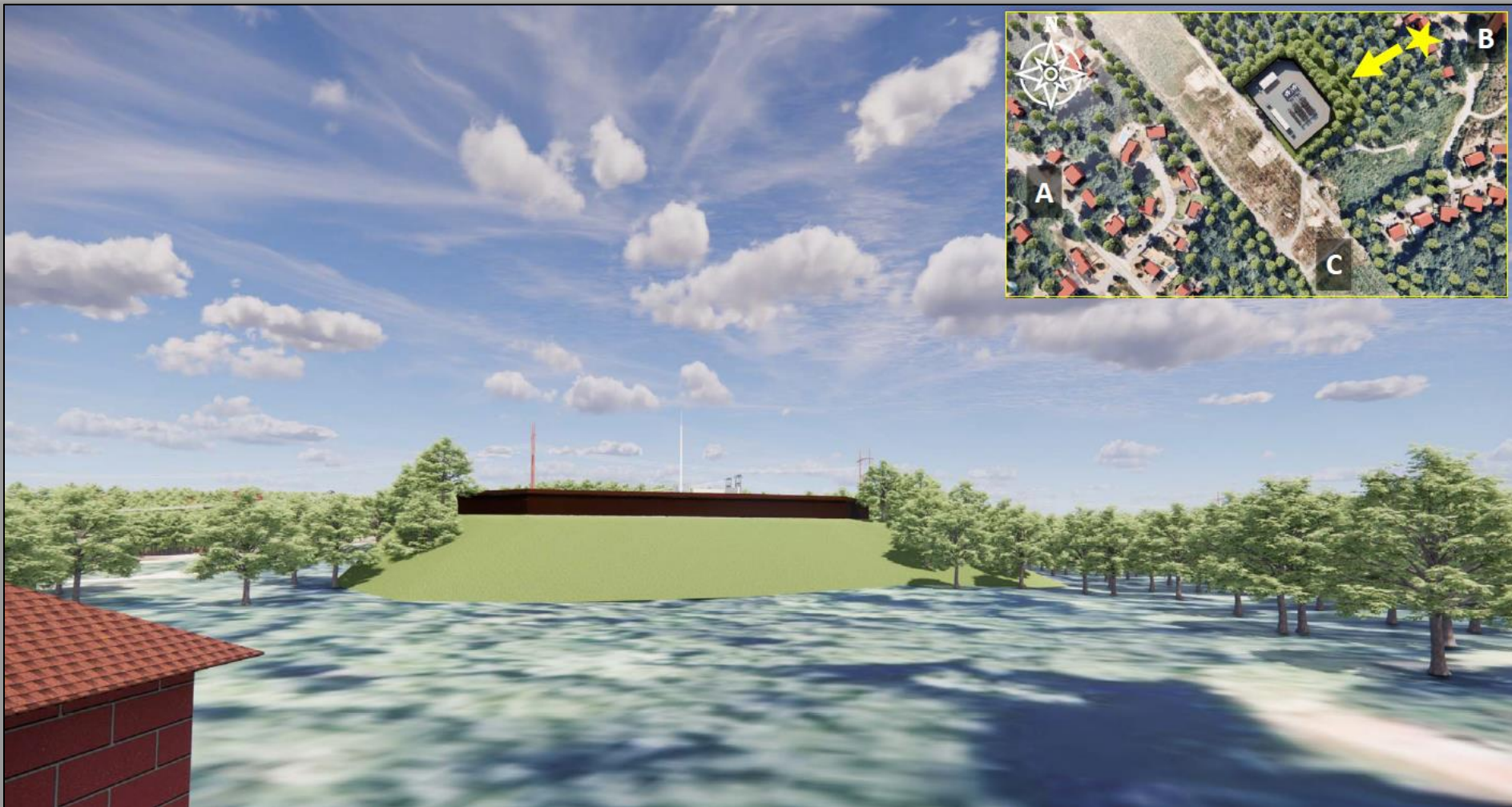


Visuals are for informational purposes only and a rendering. All trees, houses, etc. may not be to scale.

3/15/2023

New Burlington Substation Visualization

View from Area B (Locust Street), Looking Southwest



Visuals are for informational purposes only and a rendering. All trees, houses, etc. may not be to scale.

3/15/2023

Comparison External View – Sharon Substation

Substation located on Canton Street in Sharon



Main entrance view off Canton Street.

3/13/2023

Appendix

Increasing Customer Need for Power

Meeting projected future demand at the Middlesex Turnpike Substation

