

RESIDENTS' GUIDE



BURLINGTON, MASSACHUSETTS 01803

INCORPORATED FEBRUARY 28, 1799



September 2022-revised

Acknowledgements

This guide was compiled and updated by the Town Clerk's Office and made possible by the input of many town employees whose contributions are appreciated. Cover illustration by Heather Chew.

Contents

Introduction	5
Burlington at a Glance	7
Past and Present	9
The Early Years	9
Historical Points of Interest	10
Government	12
Board of Selectmen	12
Town Administrator	12
Town Meeting	12
Organizational Chart	13
Department Contact Information	14
Volunteer Opportunities.....	16
Public Meetings.....	16
Local Bylaws.....	17
Your Tax Dollars	19
Public Facilities and Land	21
General Government	21
Public Schools.....	23
Elementary School District Map.....	25
Elementary School District Addresses	26
Public Library	30
Recreation	30
Parks and Playgrounds	31
Conservation	33
Conservation Lands.....	34
Public Services and Utilities	39
Trash & Recycling	39
Hazardous Waste.....	39
Transportation	39
Rabies Clinic	40
Utilities Contact Information	40
Houses of Worship.....	40
Voter Registration and Elections	41
Voter Registration	41
Election Information	41
Absentee Voting.....	41
Our Political Address	41
Who Do I Talk To About...101 Subjects	42
Appendix	44

Introduction

Greetings,

On behalf of everyone in Burlington, I'd like to welcome you to town! We are happy that you have decided to make Burlington your home. Over the course of my career in Burlington, I have found the residents of this community to be thoughtful, generous, and dedicated to the town and the many wonderful organizations and institutions within. Our business community contributes greatly to the quality of life here with businesses both large and small generously providing volunteers and financial sponsorship for a variety of community events and initiatives.

The town provides many opportunities for culture and recreation, an outstanding school system, and of course unlimited options for shopping and dining. In addition, we continue to plan for the town's future by making investments in public safety and public infrastructure to ensure that Burlington remains a desirable community in perpetuity.

One of the things that make Burlington such a special place is the spirit of volunteerism that exists here. For that reason I strongly urge you to join your fellow residents and get involved! I look forward to meeting you at some point so please say hello if we should cross paths in the future.

Paul Sagarino
Town Administrator

Burlington at a Glance

Area	11.88 square miles - 7,577 Acres - 220 ft. above sea level.	
From Boston	13 Miles Northwest of Boston. At intersection of Rte I95 (128) and Rte 3.	
Population (2020)	Residential: 26,377	
	Under 20 years of age	20.5%
	20-39 years of age	22%
	40-59 years of age	25%
	60 years of age and over	19.2%
	Unknown age	8%
	Caucasian*	74.3%
	Asian & Pacific*	16.8%
	Hispanic*	3.1%
	African American*	4.5%
Voters (2020)		
	Democratic	4,443
	Republican	1,638
	Unenrolled	11,037
	Other	168
	Total	17,286
Income (2019)	\$51,248 per capita; \$118,721 median household (Federal 2019)	
Tax Rate (2021)	\$9.95 residential; \$25.84 commercial.	
Housing (2018)		
	Single Family Homes	6,274
	Condominium Complexes (15)	1,249 units
	Public Housing Complexes (2)	116 units
	Assisted Living Facility (3)	299 units
	Apartment Complexes (9)	2,820 units
	Rent Range	\$1,205 - \$4,400/month
	Average Tax Bill	\$4,934.00/year
	Average Home Assessed Value	\$446,100
	Residential Zoning	20,000 sq. ft. (approx. ½ acre) lots
	Married Couple Families*	61% Federal Census 2010
	Single Head of House*	12% Federal Census 2010
	Non-Family Households*	23% Federal Census 2010
	Owner Occupied Units*	79% Federal Census 2010
Land Use	20% commercial~business~industrial; 49% residential; 17% open space~recreational~vacant; 14% public facilities (Land Use Element, Master Plan)	
Transportation:	MBTA to Alewife Station, Cambridge and Boston. Fifteen minutes to commuter rail and Logan Airport shuttle at Anderson RTC Station, Woburn. Lexington and Lowell bus lines offer services to/from Burlington Mall. MBTA service to Anderson RTC Station.	

*Based on 2018 Federal Census Estimates

Government & Budget:	Selectmen/Town Administrator and Representative Town Meeting. Total Operating Budget FY22: \$152,M.
Municipal Services:	MWRA Sewer, Town Water Supply - Mill Pond Reservoir and Vine Brook/Mill Pond Water Treatment Plants, weekly curbside trash collection and recycling. Household hazardous waste collection twice/year at a central location. Leaf and yard waste curbside collection program twice/year.
Business Associations:	Burlington Area Chamber of Commerce (BACC), Burlington Rotary, North Suburban Chamber of Commerce
Schools:	Four elementary (K-5), one middle (6-8), one high school, one regional technical high school (Billerica). Per pupil expenditure \$20,606 (FY2017) Data from state MDE Report: http://profiles.doe.mass.edu/
Private Schools:	Mt. Hope Christian Center School, Church of the Open Bible, Primrose School of Burlington.
Colleges & Universities:	Northeastern University Suburban Campus
Day Care Centers:	12 commercial and 14 residential facilities.
Police & Fire:	Full time 75 member police and 73 member fire departments.
Health Care:	Lahey Clinic, Harvard Vanguard Medical Associates, AFC Urgent Care
Assisted Living:	Atria Longmeadow Place, Sunrise of Burlington, Stonebridge @ Burlington
Houses of Worship:	Thirteen Protestant, two Catholic, one Jewish, one Jehovah Witness, one Islamic.
Clubs & Organizations	Numerous social, civic, and professional organizations.
Library & Museums:	29,000-sq. ft. library constructed in 1994. Burlington Historical Museum.
Parks & Recreation	19 parks & playgrounds, 1 street hockey court, 8 tennis courts, 11 basketball courts, 30 ball/multi-purpose fields, 4 picnic areas, fishing area, volleyball court, fitness court, football stadium and track, skate park, ice skating rink, wading pool, and recreation center. Private swim and tennis club.
Shopping & Restaurants	Burlington Mall, Middlesex Commons, Crossroads, Vine Brook Shopping Plazas, and Wayside Commons. Numerous smaller shopping plazas and independent shops, as well as fine and casual dining. H-Mart, Market Basket, Shaws, Target, Trader Joe's, and Wegman's Supermarkets.
Entertainment:	10-complex cinema and Playhouse Theater. Numerous trips and tours sponsored by the Recreation Department.
Hotels:	Marriott, Hilton Garden Inn, Hyatt House, Extended Stay America, Candlewood Suites Hotel, Sonesta ES Suites, Residence Inn by Marriott, Archer Hotel
Newspapers:	Daily Times Chronicle, Burlington Union (weekly), and On-line newspapers- Wicked Local and Burlington Patch.

Past and Present

The Early Years

Burlington's history reaches back to 1640 when, as a northwest corner of the Town of Woburn, it was a portion of a grant known as Charlestown Village. Since it was originally a part of Woburn, much of Burlington's early history has been written into the history of that city. In 1730 it was incorporated as the Second Precinct of Woburn. This northwesterly corner of Woburn, sometimes known as Shawshine, decided to have a meetinghouse of its own, and in 1732, the Burlington Meetinghouse was built. Before 1800, this section was a most important part of Woburn when that community was an agricultural one and farming the principal occupation of the people. Burlington was incorporated as a separate Town on February 28, 1799. In 1800, there were 74 houses and the total valuation assessed was \$30,061.

Stage Coach

The stage coach line from Concord, New Hampshire to Boston ran through Burlington, and the arrival of the stage brought a stir of excitement into the village several times each week. Burlington might have become a city had the railroad, in 1835, been built in this town instead of Woburn, drawing all traffic and business to that area. It is said that the Burlington Town Fathers objected to the commotion that such a railroad might cause to the town. So, for the next 100 years, farming continued to be the major business of Burlington. At one time, there were several large dairy farms, a number of piggeries and shoe factories, and a well-known ham-curing plant.

Town Hall

Burlington's first Town Hall was built in 1844. It was located on a hill in Simonds Park. In 1879, the building was expanded to include rooms for public offices, a post office, library and dining room. An entry dated May 30, 1902 in the Town Record Book simply states: "Town Hall burned this morning at 9:30." The current Town Hall is the third and was built in 1969 and renovated in 1999.

Town Seal

The Town Seal, designed in 1899, depicts the Sewall House that was destroyed by fire in 1897. The Sewall House was home to the Town's early ministers and was located on Lexington Street. A granite marker commemorates the site.

Route 128

In 1954, the completion of Route 128 acted as the catalyst for industrial expansion. As industry established itself here, the population began to mushroom. In 1950, the total population of Burlington was 3,250. In 1960, it was 12,952 and considered the fastest growing town in Massachusetts.

Historical Points of Interest

In November 1999 John Goff of Historic Preservation Design (Salem, Mass.) completed the Burlington Historic Resources Survey. For more information and pictures, visit the Archives at Town Hall or on the Web at <http://www.burlington.org/residents/archives.php>

Burlington has many historical points of interest, the following are among them:

Francis Wyman House - 56 Francis Wyman Rd. Built in 1666 and one of the three oldest homes in Massachusetts. It is a National Landmark.

The West School - Corner of Francis Wyman Rd. /Bedford St. Built in 1794 and served as a schoolhouse until 1898.

United Church of Christ - Corner of Lexington St. /Bedford St. Built in 1732 as the 2nd Parish Meetinghouse of Woburn.

The Winn House - 13 Wyman St. Built in 1734. During Revolutionary times it was known as the Hen and Chickens Tavern.

Old Burying Ground - Bedford St. across from Simonds Park. Pre-1736.

Reed Family Home - 25 Chestnut St. Built in 1750, it was a watering station stop for farmers on the way to market in Boston.

Gen. John Walker House - 9 Bedford St. Built in 1780 and was the birthplace of James Walker, President of Harvard University 1853-1860.

Grand View Farm (Marion Tavern) - 59 Center St. Built prior to 1834 - Stage Coach Stop.

Historical Museum - Corner of Bedford St. /Cambridge St. Built in 1855 and served as a school until 1897. Served as the Town's library until 1969.



Photographs courtesy of Burlington Archives and Burlington Historical Commission. See www.burlington.org for more information.

- Top** *Cambridge Street looking toward Center Street, ca. 1930 (item 205).* Left to right: house of Charles Henry Foster (1852-1933) and Librarian Henrietta "Nettie" Richardson Foster (1859-1951), Dearborn's store, the Charles Dearborn house, Statler Tissues billboard, Wood Tavern, and the second town hall. The Wood Tavern was built prior to the American Revolution by Capt. John Wood, Jr. (1740-1809), a Revolutionary War captain under the command of Col. Loammi Baldwin (1745-1807), designer of the Middlesex Canal, and the first individual to graft the Baldwin apple. This is the current location of the Burlington Fire Station, May 1959-present. Built in 1915, the second town hall stood at the current location of the town hall annex. When the town hall and police station building committees were appointed in 1967, the second town hall had reached capacity. The building was demolished in 1969 and a new police station was built on the site. The Burlington Police Department moved into the new police station in November 1970. This location now houses the town hall annex, which was renovated in 1997-1998. Gift of John Edward Fogelberg; 2000.08.
- Middle-left** *View down Main Street [Center Street] from Cambridge St., ca. 1900 (item 78).* The Wood Tavern is the first building on the left; Cutler's general store is the second building (see item 205 for more information). Transfer; Historical Commission; 1999.06.
- Middle-right** *Front yard of Crawford farmhouse looking toward Lowell St. in foreground and Newbridge Ave. in distance, ca. late 1940s (item 227).* The photograph shows Newbridge Ave. in the distance; the far left side of the photograph is at the northeast end of Newbridge Ave. The road that runs parallel to the bottom of the photograph is the driveway to the house. The tire indentations turn left from the driveway onto what was then Lowell St. Lowell St. is now known as Beacon St.; during the Colonial era the road was known as Swamp Road. Gift of Herbert William Crawford, 2000.09 (duplicate).
- Lower-left** *Aerial view of the town common, ca. 1980s (item 1).* Transfer; Historical Commission; 1999.06.
- Lower-right** *Exterior of the second town hall, ca. mid-20th century (item 17)* (see item 205 for more information). Gift of John Edward Fogelberg; 2000.08.

Government

Board of Selectmen

The Executive body of Burlington's Town government is the Board of Selectmen. This board consists of five members elected for three years, with overlapping terms. Meetings are held twice a month at the Town Hall Main Hearing Room. Selectmen, as the principal officers in town, have general supervision over all matters that are not specifically delegated by law or vote to some other officer or board.

Town Administrator

The Town Administrator is responsible for the administration and coordination of all matters under the jurisdiction of the Board of Selectmen and acts as the Personnel Director. The Town Administrator is responsible for implementing policies, directives, and votes of the Board of Selectmen and makes all appointments under the jurisdiction of the Board of Selectmen.

Town Meeting

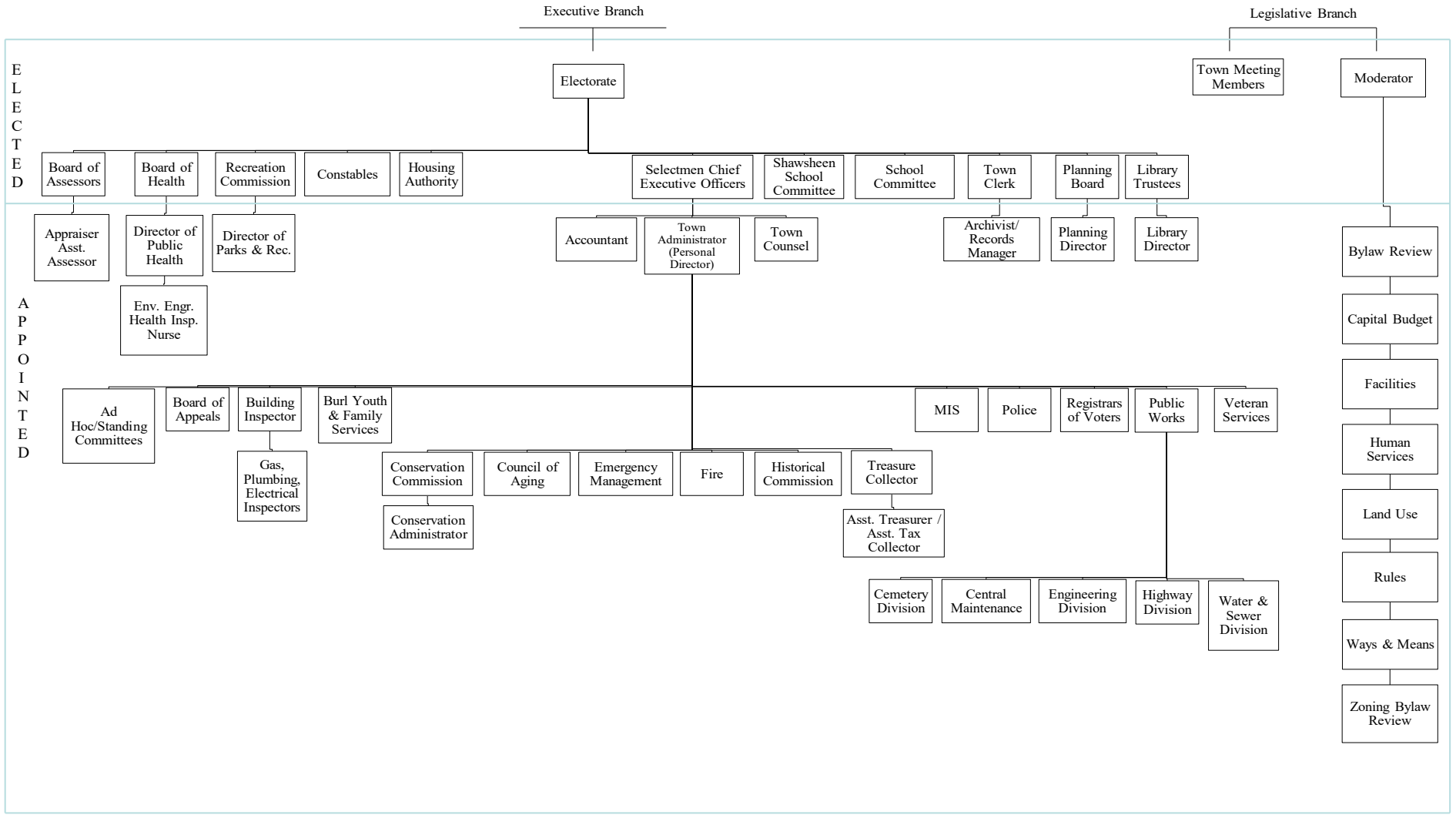
The unique form of government in New England that sets it apart from all other sections of our country is the Town Meeting. Here, New Englanders still maintain the practice of operating local government as a democratic process. The town is divided into seven precincts, and each precinct votes for its representatives to the Town Meeting. There are a total of 126 elected Town Meeting Members. The Town Meetings are held three times each year in January, May (Annual), and September. Articles of the warrant (agenda items) must be presented to the Board of Selectmen 45 days before the meeting by Town Meeting Members or ten registered voters and Zoning Articles must be presented 90 days before the meeting. The decisions reached at Town Meeting affect the lives and the purses of all citizens of Burlington. Town Meeting Members vote on the annual operating budget of the Town, land use issues, capital expenditures, and Zoning and General Bylaws.

Town Meeting is conducted at the Burlington High School, Fogelberg Performing Arts Center, Monday and Wednesday evenings until all the articles have been acted upon. A quorum of 63 members is mandatory. The public is invited to attend and may speak on issues being considered upon the recognition of the Moderator. Burlington Cable Access Television (BCAT) broadcasts meetings live on the local government channel 99 (COMCAST), 15 (RCN) and 41 (VERIZON).

Listing of Town Meeting Members, elected officials, and appointed officials, is available at the Town Clerk Department and on the web www.burlington.org

Organization Chart Title

Town of Burlington, MA



Department Contact Information

Main Number
(781) 270-1600

(781) 270-1608 FAX
www.burlington.org

Office Hours 8:30 am – 4:30 pm Monday, Tuesday & Thursday
8:30 am – 7:00 pm Wednesday
8:30 am – 1:00 pm Friday

Town Department	Phone	Email or Web
Accounting	781-270-1610	accounting@burlington.org
Animal Control Officer	781-270-1698	aco@bpd.org
Archives	781-270-1604	archives@burlington.org
Assessors	781-270-1650	assessor@burlington.org
BCAT	781-273-5922	http://www.bcattv.org
B-Line (Community Bus)	781-270-1965	burlingtonpublictransit@burlington.org
Board of Health	781-270-1955	boh@burlington.org
Public Nurse	781-270-1955	boh@burlington.org
Environmental Engineer	781-270-1955	boh@burlington.org
Building Inspector	781-270-1615	building@burlington.org
Burlington Youth & Family Services	781-270-1961	byfs@burlington.org
Conservation Commission	781-270-1655	conservation@burlington.org
Council On Aging	781-270-1950	coa@burlington.org
Dog Pound	781-270-1698	aco@bpd.org
Emergency Management Agency	781-270-1914	
Fire		fire@burlington.org
Emergency & Ambulance	911	
Business	781-270-1925	fire@burlington.org
Housing Authority	781-272-7786	BHA@burlingtonhama.org
Human Resources	781-270-1774	hr@burlington.org
Library	781-270-1690	library@burlington.org
Planning Board	781-270-1645	planning@burlington.org
Police		www.bpd.org info@bpd.org
Emergency	911	
Business	781-270-1914	info@bpd.org
Public Works	781-270-1670	dpwburlington@burlington.org
Cemetery	781-270-1982	dpwburlington@burlington.org
Central Maintenance	781-270-1678	dpwburlington@burlington.org
Engineering	781-270-1640	engineering@burlington.org
Highway	781-270-1677	dpwburlington@burlington.org
Water & Sewer Utilities Division	781-270-1679	dpwburlington@burlington.org

Town Department	Phone	Email or Web
Recreation Office	781-270-1695	recreation@burlington.org
Selectmen	781-270-1600	selectmen@burlington.org
Shawsheen Valley Technical High School	978-667-2111	http://www.shawsheentech.org
School Department	781-270-1800	https://www.burlingtonpublicschools.org/
Superintendent of Schools	781-270-1800	
Burlington High School	781-270-1800	
Marshall Simonds Middle School	781-270-1781	
Fox Hill School	781-270-1791	
Francis Wyman School	781-270-1701	
Memorial School	781-270-1721	
Pine Glen School	781-270-1712	
Tax Collector	781-270-1625	taxcollector@burlington.org
Town Administrator	781-270-1635	selectmen@burlington.org
Town Clerk	781-270-1660	clerk@burlington.org
Treasurer	781-270-1623	tax@burlington.org
Veterans Agent	781-270-1959	veterans@burlington.org

Agency Numbers & Websites

Agency	Phone	Website
Attorney General - Consumer Protection	617-727-8400	https://www.mass.gov/topics/consumer-protection
Better Business Bureau	508-652-4800	www.bbb.org
Burlington Area Chamber of Commerce (BACC)	781-273-2523	https://www.burlingtonchamberofcommerce.org/
Daily Times Chronicle (daily newspaper)	781-933-3700	http://homenewshere.com/
Burlington Union (weekly newspaper)	617-629-3390	www.burlington.wickedlocal.com
Citizen Information (State)	617-727-7030	http://www.sec.state.ma.us/
Constables: William Pepicelli	781-789-0605	
Anthony Saia	781-718-4612	
Lahey Clinic	781-744-5100	www.lahey.org
Comcast (Cable)	800-934-6489	https://www.xfinity.com/
North Suburban Chamber of Commerce	781-933-3499	www.northsuburbanchamber.com
Post Office	781-270-4449	www.usps.com
Probate and Family Court	617-788-6600	https://www.mass.gov/orgs/probate-and-family-court
RCN (Cable)	800-746-4726	www.rcn.com
Registry of Deeds	617-679-6300	www.middlesexsouthregistry.com
Registry of Motor Vehicles	866-627-7768	https://www.mass.gov/orgs/massachusetts-registry-of-motor-vehicles
Social Security Administration	800-772-1213	www.ssa.gov
Verizon	800-837-4966	www.verizon.com
Woburn District Court	781-935-4000	https://www.mass.gov/locations/woburn-district-court

Volunteer Opportunities

For residents who are interested in getting involved in town government, there are numerous volunteer opportunities. A description of most committees is contained in the General Bylaws, Article V, which is available at the Town Clerk Department and on the website:

http://www.burlington.org/town_government/town_clerk/index.php

The Town Administrator makes appointments to the following boards, committees, and commissions each summer:

- B-Line Advisory Committee
- Beautification Committee
- Board of Appeals
- Board of Registrars
- Burlington Youth & Family Services
- Conservation Commission
- Council on Aging
- Cultural Council
- Disabilities Access Commission
- Facilities Committee
- Housing Partnership Committee
- Information Systems Advisory Committee
- Master Plan Study Committee
- Registrars of Voters
- Rink Oversight Committee



The Town Moderator appoints members to committees of Town Meeting. Each committee is responsible for reviewing existing and proposed policies relating to their jurisdiction. The Committees serve as advisors to Town Meeting. If you are interested in serving on any of the following committees, submit a letter of interest to the Moderator, c/o Town Clerk, Town Hall.

- Bylaw Review Committee
- Capital Budget Committee
- Facilities Committee
- Human Services Committee
- Land Use Committee
- Rules Committee
- Ways & Means (Finance) Committee

Additionally, the Archives, Council on Aging, Conservation, Historical Commission, Library, and Recreation offer volunteer programs. If interested, contact the respective department directly. An application is provided in the Appendix.

Public Meetings

Boston Cares, www.bostoncares.org, offers volunteer opportunities in the Greater Boston area.

All meetings of elected or appointed members of boards, committees, or commissions are subject to the Open Meeting Law. Notices of meetings are posted in the Town Hall at least 48 hours in advance (excluding Saturdays, Sundays and holidays). The public is always invited to attend. The only time the public is prohibited from attending is when the board votes at an open meeting to go into executive session for legally permissible reasons.

All meetings are held in handicapped-accessible facilities. A meeting calendar is posted at the Town Hall and on BCAT (Burlington Cable Access Television). The calendar is also on the website http://www.burlington.org/town_government/town_clerk/index.php

Selectmen, School Committee, Planning Board, Board of Appeals, Conservation Commission, Town Meetings, etc. are broadcast live by BCAT. COMCAST: Channels 9, 22, and 99. RCN: Channels 3, 13, and 15. VERIZON: Channels 39, 40, and 41.

Local Bylaws

In addition to federal and state laws and regulations, the Town has adopted many of its own local laws. There are two publications containing all local laws: the Zoning Bylaws which relate to land use, construction, home improvements, and development issues, and the General Bylaws which relate to public safety, the environment, and administration.

Some bylaws of particular interest to residents are:

Leash Law - Article XIII, Section 2.1 "No dog shall be permitted away from the premises of its owner or keeper except when in the charge of a competent person at least twelve years old and controlled by a leash; or obedient to command; or confined within a vehicle; or confined to another premises."

Dog Licensing Requirements - Article XIII, Section 2.2.3 "An owner or keeper of a dog kept in the Town of Burlington who has not licensed said dog within 60 days of becoming a resident or being notified by the Clerk's office shall be required to pay a fine of Ten Dollars (\$10.00)."

Pooper Scooper Law - Article XIII, Section 2.7 "It shall be the duty of each person who owns, possesses or controls a dog to remove and dispose of any feces left by his/her dog on any sidewalk, street or other public area in the Town."

Handicapped Parking Violations & Fines - Article XIII, Section 1.24 "...no person shall leave or cause to be left any unattended vehicle within parking spaces designated as reserved for vehicles owned and operated by disabled veterans or handicapped veterans or handicapped persons." Section 1.24.6 "Penalty for violation of this bylaw shall be \$200."

Yard Sale & Open House Signs - Article XIV, Section 2.2.2.1 "Yard sale signs, open house

signs and any other signs or notices posted to advertise a specific event cannot be posted sooner than two days prior to the event, and such signs and/or notices must be removed from all places of posting no later than 24 hours after the conclusion of the event.”

Wetlands Protection - Article XIV, Section 1.2 “Except as permitted by the Conservation Commission no person shall remove, fill, dredge, build upon, degrade, discharge into, or otherwise alter the following resource areas as defined in the Burlington Wetland Bylaw Regulations: any freshwater wetlands; marshes; wet meadows; bogs; swamps; vernal pools; springs; banks; reservoirs; lakes; ponds; beaches; lands under water bodies; lands subject to flooding by groundwater or surface water; or lands adjoining these resource areas out to a distance of 100 feet, known as the buffer zone. The Commission may establish performance standards for work within the buffer zone to protect the aforementioned resource areas; however, the buffer zone itself is not a resource area.

Except as permitted by the Conservation Commission, no person shall remove, fill, dredge, build upon, degrade, discharge into, or otherwise alter the following resource areas: streams; brooks; creeks; rivers; lands adjoining these waterways out to a distance of 200 feet, known as the riverfront area. Said 200-foot riverfront resource area shall apply to all streams shown on the map “Regulatory Streams of Burlington” to be adopted and incorporated in regulations, whether the stream is perennial or intermittent.”

Winter Parking - Article XIII, Section 1.12 "No person having a vehicle under his care or control shall leave the same parked or unattended upon a street between the hours of 2:00 AM and 8:00 AM from December 1 through April 1 in each year."

The Zoning and General Bylaws are sold at the Town Clerk Office as a hard copy or are available free of charge on the website – http://www.burlington.org/town_government/town_clerk/index.php

Your Tax Dollars

FINANCIAL FOR FISCAL YEARS:	2005	2010	2015	2016	2017	2018	2019
Assessed Value	4.02B	4.52B	5.3B	5.53B	5.8B	6.2B	6.6B
Tax Rate: Residential	11.85	12.00	11.35	11.46	11.06	10.62	10.48
Commercial	31.70	32.24	29.40	38.28	28.10	27.56	27.22
Appropriated	79.5M	103.2M	119.9M	124.9M	142.0M	139.9M	147.8M
Total Budget	82.4M	120.6M	140.1M	149.3M	126.8M	131.8M	137.4M
Raised by Taxation	78.2M	78.2M	94.6M	98.3M	102.8M	106.9M	112.1M

Contiguous Communities' Tax Rates FY2019

Community	Residential	Commercial*
Bedford	\$12.96	\$28.42
Billerica	\$13.48	\$31.41
Lexington (FY 2018)	\$14.30	\$27.69
Tewksbury	\$15.84	\$27.63
Waltham	\$12.66	\$26.45
Wilmington	\$13.75	\$30.94
Woburn	\$ 9.50	\$23.72
Average	\$12.87	\$27.94
*** Burlington ***	\$10.48	\$27.22

Tax Summary by Property Class – FY17

Property Class	Assessed Value	%	Assessed Tax	%
Residential	\$3,604,357,624	61.66%	\$39,864,195	40.0%
Commercial*	\$2,138,554,119	38.6%	\$62,999,352	60.0%
Total	\$5,846,327,455	100%	\$102,863,548	100%

* Includes Industrial and Personal Property

Public Facilities and Land

General Government

Facility

Town Hall
29 Center Street
270-1600
www.burlington.org

Archives Extended Hours:

Town Hall Annex
25 Center Street
270-1600

Human Services Center
61 Center Street
270-1600

Nurse: Blood Pressure Clinic

Flu Clinics

Mercury

Vaccines for children

Sharps Disposal

Departments Housed

Accounting, Archives, Assessors,
Network Administration,
Selectmen/Town Administrator, Town
Clerk, and the Tax Collector/Treasurer
Departments.

Evenings by Appointment 270-1604

Building, Conservation, Department of
Public Works (DPW), Engineering, and
Planning Departments.

Board of Health, Director of Public
Health, Burlington Youth & Family
Services, Council on Aging, Recreation,
Senior Center (Kelly-Murray Wing),
and Veteran's Director Departments.

call for apt: 781-270-1955

Check on web for Schedule during the
Fall season

Drop off at Health Office anytime

Call: 781-505-1139

Fire Station or Police Station
*Containers are only available at the
Board of Health Office

Facility	Address	Phone
Police Station	45 Center Street	781-270-1914 (business)
Fire Station Sub Station	21 Center Street 114 Terrace Hall Avenue	781-270-1925 (business)
Burlington Housing Authority(State Agency)	15 Birchcrest Street BHA@burlingtonhama.org	781-272-7786
Chestnut Hill Cemetery	52 Bedford Street	781-229-1879
Pine Haven Cemetery	84 Bedford Street	781-270-1982
Water Treatment Plants:		
Vinebrook Treatment Plant	171 Middlesex Turnpike	781-270-1679
Mill Pond Reservoir	70 Winter Street	781-270-1679
Dog Pound	3 Great Meadow Rd (At the DPW Highway Barn)	781-270-1698

Public Schools

Burlington School Administration
 Burlington High School
 123 Cambridge Street
 (781) 270-1800
www.bpsk12.org

Elementary Schools (Grades K-5) (2018-2019)

School	Student Population	# of Teachers
Fox Hill Fox Hill Road (781)270-1791	426	42.25
Francis Wyman Terrace Hall Avenue (781) 270-1701	532	55.15
Memorial Winn Street (781) 270-1721	398	42.25
Pine Glen Pine Glen Avenue (781) 270-1712	319	32.25
Total K-5	1675	171.9

Middle School (Grades 6-8)

Marshall Simonds Winn Street (781) 270-1781	787	81.4
---	-----	------

High School (Grades 9-12)

Burlington High School 123 Cambridge Street (781) 270-1839	1071	88
Specialists (Art, Music, PE, etc.)		included

Regional Technical High School

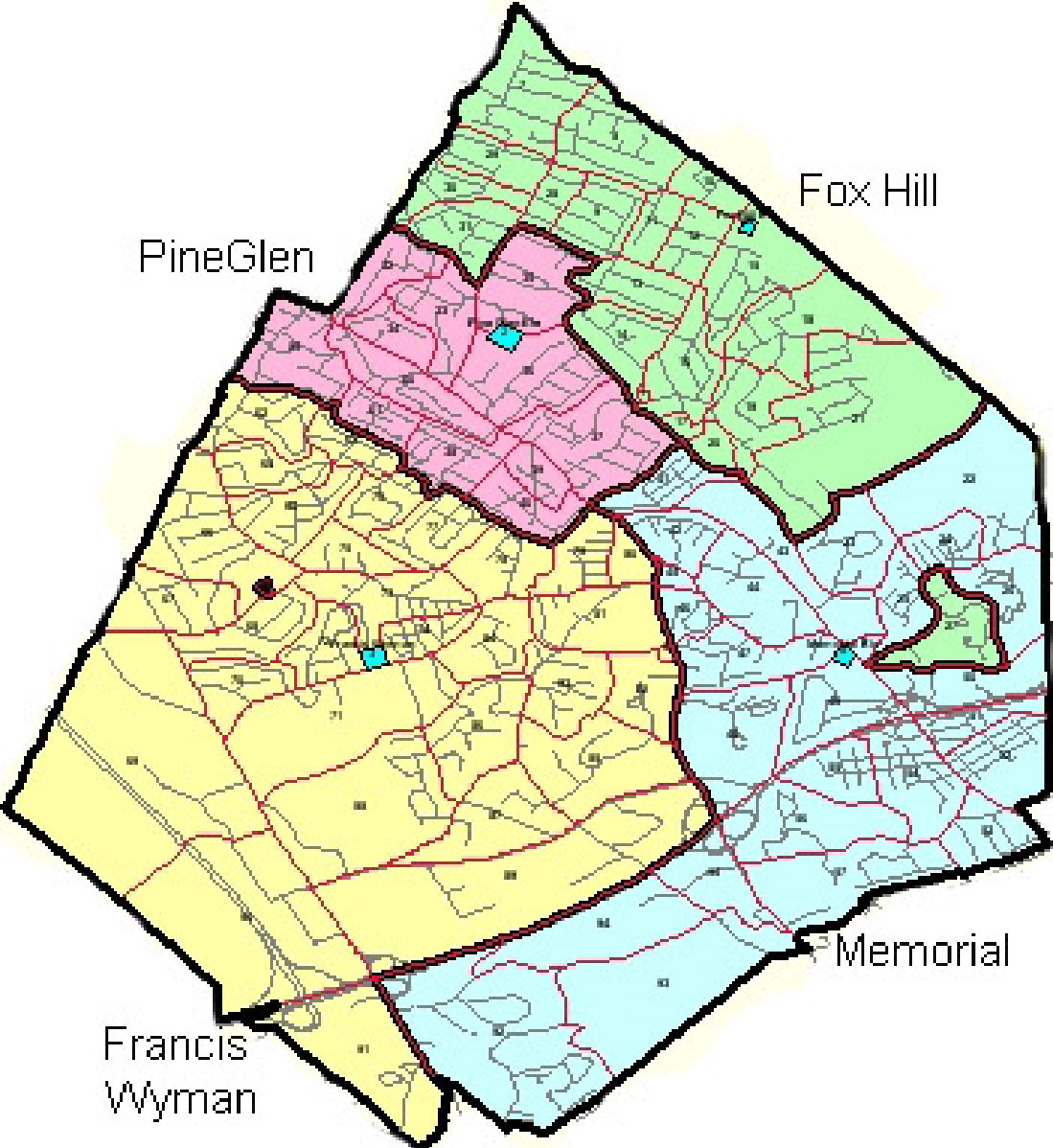
Shawsheen Valley Technical High School
100 Cook Street
Billerica, MA
(978) 667-2111
<https://www.shawsheentech.org/>

District served: Billerica, Burlington, Bedford, Wilmington, and Tewksbury

Student Population: 1,294 (FY 2018)
Burlington Students: 125
Teachers: 125.3
Paraprofessionals: 13
Per pupil expenditures: \$18,331
Data received from the MDE Report: <http://profiles.doe.mass.edu/shawsheen>

School closings are on the WEB as well as broadcast on WBZ and other radio channels as well as on BCAT.

Elementary School District Map



Elementary School District Addresses 2019

Fox Hill

Barnum Rd	Lisa St	Vincent Rd
Baxter Circle	Locust St (76 to End)	Westwood St
Beacon Village	Lucaya Circle	Wheatland St
Beaverbrook Rd	Makechnie Rd	Whitney St
Black Horse Lane	Mallard Way	Wildwood Lane
Blueberry Lane	Marie Circle	Wildwood St
Boulder Dr	Marjorie Rd	Wilhelmina Ave
Brenda Lane	Martin St	Wilmington Rd (81 to End)
Bristol St	Marvel Ave	
Brookside Lane	Meadowcroft Rd	
Caroline St	Michael Dr	
Carter Rd	Mill St (39 to End)	
Cathy Rd	Mullberry Lane	
Chandler Rd	Myrna St	
Chester Ave	Park Dr	
Cook Rd	Patriot Rd	
Corbett Dr	Phillip Ave	
Donald Rd	Prouty Rd	
Donna Lane	Radcliff St	
Doris St	Randolph Rd	
Drake Rd	Redcoat Lane Ext	
Dublin Circle	Richard Rd	
Eisenhower Dr	Richfield Rd	
Ellery Lane	Ridgewood Lane	
Erin Lane	Rocky Hill Rd	
Fox Hill Rd	Ruping Dr	
Freeport Dr	Russell Circle	
Gedick Rd	Sandra Ave	
Gibson St	Sarah St	
Goodwin Dr	September Lane	
Guild Rd	Skilton Lane (41 to End)	
Hansen Ave	Spring Valley Rd	
Harris Dr	Stanwood St	
Hart St	Stephanie St	
Harvard Ave	Stewart St	
High Pine Ave	Stonehill Circle	
Holden Ave	Sumner St	
Irene St	Swain Road West	
Jackson Rd	Thornton Dr.	
Kingsdale St	Tinkham Ave	
Laing Circle	Toner Dr	
Lee Ave	Town Line Rd	
	Upland Rd	

Francis Wyman

Adams St
Ainsworth St
Algonquin Dr
Amherst Rd
Anna Rd
Arlington Rd
Barbara Circle
Baron Park Lane
Bates St
Bedford St (Cambridge St South to
Middlesex Turnpike)
Benson Way
Bradford Rd
Brown Ave
Buckman Dr
Burlington Mall Rd
Burlington Woods Dr
Cambridge St (55-181 Odd Only)
Carey Ave
Cedar St
Chadwick Rd
Church Lane
Clonmel Ave
Colleen Circle
College Rd
Corcoran Rd
Cranberry Lane
Crowley Rd
Crystal Circle
Cypress Dr
Daniel Dr
Dartmouth Rd
Demone Dr
Dorothy Rd
Druid Hill Ave
Dunlap Rd
Eastern Ave
Edgemont Ave
Elm Ave
Evelyn St
Evergreen Ave
Fairfax St
Foster Rd
Fowler Terrace
Francis Wyman Rd (41 to End)
Fred St
Frothingham Rd
Garfield Circle
Garrity Rd
Gayland St
Gidley St
Glendale Rd
Gloria Circle
Great Meadow Rd
Greenleaf Way

Greenwood Rd

Hallmark Gardens
Hancock St
Haven Terrace
Hemlock Lane
Hickory Lane
Hidden Valley Dr
Highland Way
Hilltop Dr
Hope St
Humboldt Ave
Independence Dr
Indian Hill Rd
James St
Janet Rd
Jefferson Ave
Juniper St
Kay Rd
LaSalette Dr
Laurel Hill Lane
Laurel Lane
Lexington St
Liberty Ave
Lido Ave
Luther Rd
Macon Rd
Manhattan Dr
Marion Rd
Mark St
Marrett Dr
Maud Graham Circle
Maureen Dr
McCarthy Dr
McGinnis Dr
McSweeney Way
Meadowvale Rd
Mellin St
Michele Dr
Middlesex Turnpike (North of Route 128)
Mildred Rd
Mohawk Rd
Morrison Rd
Murphy Ct
Nichold St
North Ave
Old Colony Rd
Orchid Circle
Partridge Lane
Paulson Dr
Pine Ridge Rd
Pinevale Ave
Pinewold Ave
Pleasant St
Polk St
Princeton Rd

Raymond Rd
Raymond Rd Ext
Redmond St

Reed St
Rosario Way
Sandy Brook Rd
Savin St
Second Ave
Shady Lane Dr
Shea Circle
Skelton Rd (20 to End)
South Ave
South Bedford St (1 - 80)
Spruce Hill Rd
St Marks Rd.
Stony Brook Rd
Sunset Dr
Tami Lane
Terrace Hall Ave
Theresa Ave
Tremonts
University Ave
Valley Circle
Victor Ave
Violet Rd
Visco Rd
Washington Ave
Webber Rd
Williams Circle
Willow Way
Windsor Lane
Woodside Lane

Memorial

Angela Circle
Arbor Court
Arborwood Dr
Ardmore Ave
Azalea Dr
Bassett Ave
Beacon St
Bedford St (Center St to
Cambridge St North)
Belmont Rd
Bennett Lane
Bethel Lane
Birch St
Birchcrest St
Blanchard Rd
Briarwood Lane
Burlington St
Burton Rd
Cambridge St (1 - 182)
Carlton Ave
Carol Ave
Cedarwood Lane
Center St
Central Ave
Cierra Way
Colburn St
Cormier Rd
Crawford Rd
Crescent Rd
Creston Ave
Dearborn Rd
Derryfield Ave
Dover Dr
Duncan Rd
Edgemere Ave
Edwards Rd
Elizabeth Ave
Eugene Rd
Fairlawn Ave
Fantasia Lane
Fieldstone Dr
Florence Rd
Forbes Ave
Frances Rd
Ganley Dr
Georgia Dr
Given Dr
Gleason Rd
Glen Ave
Grandview Ave
Greystone Court
Grove Lane
Hampden Ave
Harriett Ave
Hearthstone Dr
Heather Dr

Heritage Way
Hill Circle
Hillsdale Ave
Hillside Ave
Holly Glen St
Howard Rd
Johnson Rd
Josephine Ave
Julia Connors Dr
Keans Rd
Kelly Farm Way
Kempton Ave
Kenmere Ave
Kimball Court
Kimball Court (Bldgs 8 & 9)
Knollwood Court
Larson Circle
Lilac Lane
Lincoln Knoll Lane
Little Brook Ct
Locust St (1 - 75)
Louise Rd
Lowell St
Lt Litchfield Way
Maguire Way
Manor Ave
Maple Ridge Dr
Maple St
Margaret St
Marigold Way
Mary St
Mayflower Ave
McCafferty Way
McIntire Dr
McNamara Way
Meyers Lane
Middlesex Turnpike (South of
Route 128)
Mill St (1-38)
Mooney Circle
Mooney Rd
Mountain Rd
Mountain View Way
Muller Rd
Newbridge Ave
North St (Lexington)
Northeastern Ave
Oak St
Old Concord Rd
Old Peach Orchard Rd
Overlook Ave
Oxbow Lane
Paige Rd
Peach Orchard Rd
Pearl St
Pearson Circle

Pine Ave

Pond Lane
Porter Ave
Randall Dr
Ray Ave
Reserve Way
Rhuey Pass
Richardson Rd
Ridge Rd
Rita Ave
Robert St
Robin St
Rolling Lane
Ruthven Ave
Sawyer St
Sears St
Seven Springs Lane
Shamrock Dr
Sleeper Dr
Sorelle Place
South Bedford St (81 to End)
Sparhawk Dr
Stonewall Lane
Sullivan St
Sunnyfield Ave
Sunnyside Ave
Susan Ave
Sycamore St
Sylvester Rd
Theodore Circle
Thistle Rd
Thomas St
Toomey Circle
Travers Lane
Treetop Court
Van De Graaff Dr
Villagewood Dr
Waite Ave
Wall St
Walnut St
Ward St
Wayside Rd
Wellesley Ave
Westgate (Bldgs 105 & 107)
Wheeler Rd
Wildmere Ave
Winn St
Winn Valley Dr
Winnmere Ave
Winter St
Wyman St

Pine Glen

Arboretum Way

Alcine Lane
Allison Dr
Alma Rd
Arnold Terrace
Arthur Woods Ave
Austin St
Brantwood Lane
Brookfield Rd
Bruce St
Butters Lane
Cambridge St [183 - 411]
Cheryl Ave
Chestnut Ave
Chestnut Rd
Clifford Rd
County Rd
Cresthaven Dr
Cutting Lane
Dale St
Davida Rd
Dennis Dr
Dolores Dr
Douglas Ave
Edsel Dr
Ellen Rd
Farms Dr
Fernglade Rd
Forest Rd
Four Acre Dr
Francis Wyman Rd [1 - 40]
Gardner Way
Glenwood St
Grant Ave
Great Pines Ave
Hannah Way
Hershey Rd
Hillcrest Rd
Holly St
Ivy Lane
Jessica Dr
Joanne Rd
Johns Rd
Jonathan Rd
Kinney Ave
Lantern Lane
Laurie Lane
Ledgewood Dr
Leopold St
Leroy Dr
Long St
Lucy Rd
Manning St
Maryvale Rd
Moline Rd
Moran Ave

Moss St
Murray Ave

Nelson Rd
Nevada Rd
Oak Knoll Rd
Olean Rd
Pathwoods Ave
Patricia Way
Paul St
Paula St
Phyllis Ave
Pine Glen Way
Pontos Ave
Purity Springs Rd
Putnam Rd
Rahway Rd
Robinhood Lane
Scott Ave
Sedalia Rd
Sheighla Dr
Sheldon St
Short St
Skelton Rd 1 - 19
Skilton Lane 1 - 40
St Mary Rd.
Sumpter Rd
Taylor Ave
Teaberry Lane
Terry Ave
Van Norden Rd
Virginia Rd
Wing Terrace
Winona Rd
Wilmington Rd 1 - 80
Woodcrest Ave
Woodhill Rd

Public Library

Burlington Public Library
22 Sears Street
(781) 270-1690

<http://www.burlington.org/departments/library/index.php>

Regular Hours: Monday-Thursday 10am-9pm
Friday 10am-6pm
Saturday 10am-5pm
Sunday 1pm-5pm

Summer Hours: Monday-Thursday 10am-9pm
Friday 10am-6pm
Saturday 10am-2pm
Sunday Closed

Recreation

Recreation Department
61 Center Street
(781) 270-1695

http://www.burlington.org/community_development/recreation/index.php

Burlington Parks & Recreation offers a multitude of programs, trips and events for all ages. Seasonal brochures are mailed to residents four times a year. For your convenience, online registration is available on our website. You may also register by mail or in person at the Parks & Recreation Department. If it is your first time registering, please bring proof of residency with you.

Recreation Center

Burlington's Recreation Center at the Center for Human Services is available to rent on a space-available basis. Facilities at the Recreation Center include meeting rooms, function rooms and a gymnasium. Sorry, the Recreation Center is not available for private functions. For further information, including a fee schedule, please contact the Recreation Office.

Facility Permits

Burlington residents and companies may reserve athletic fields on a space available basis. Contact the Recreation Office to inquire about availability. You can find the current fee schedule on our website. Tennis courts are open to Burlington residents on a first-come first-served basis. Please limit playing time to one hour if others are waiting to play. You can find tennis courts at both Rahanis Playground and Simonds Park.

Serving People with Disabilities

We are committed to providing recreational opportunities for residents of all ages and abilities. If you or a family member needs accommodations to participate in the Town's recreation activities, please contact our office and ask to speak to our Certified Therapeutic Recreation Specialist.

Parks and Playgrounds

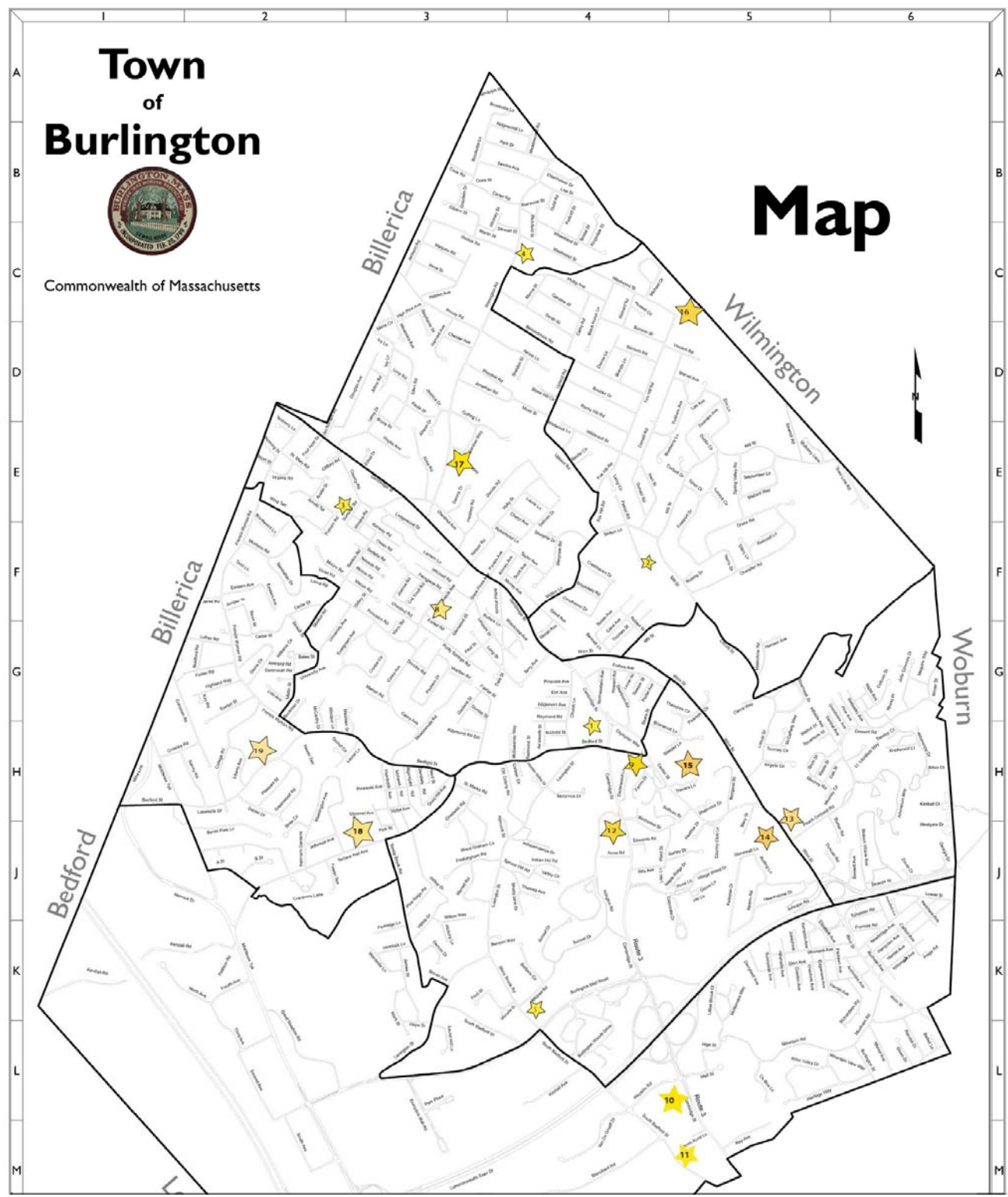
<p>Simonds Park – (1) Reference Number for Map on next page Location: 10 Bedford Street Facilities: Two lighted little league baseball fields, one lighted softball field, one lighted tennis court, four lighted pickleball courts, two lighted basketball courts, wading pool, playground, skate park, street hockey court, picnic area, concession stand, restrooms</p> <p>Rahanis Park – (2) Location: 84 Mill Street / 2 Patriot Road Facilities: Two multi-purpose grass fields, one softball field, six tennis courts, one basketball court, one sand volleyball court, playground, picnic area, gaga ball pit, dog park, restrooms</p> <p>Regan Park – (3) Location: 14 Sumpter Road Facilities: One little league baseball field, one basketball court, two pickleball courts, playground, picnic area</p> <p>Veterans Park – (4) Location: 110 Wilmington Road (Route 62) Facilities: One little league baseball field, ½ basketball court, playground</p> <p>TRW Park – (5) Location: 26 Mall Road Corner of Mall Road and Stony Brook Road Facilities: Two little league baseball fields, one multi-Purpose grass field, playground, fitness court, walking path</p> <p>Overlook Park – (6) Location: 1 Edgemere Avenue Facilities: Playground</p> <p>Wildmere Park – (7) Location: 19 Wildmere Avenue Facilities: One basketball court, playground</p> <p>Pathwoods Tot Lot – (8) Location: 20 Pathwoods Avenue Facilities: Playground, ½ basketball court</p> <p>Town Common – (9) Location: 2 Bedford Street Corner of Bedford Street/Cambridge Street Facilities: Bandstand</p> <p>Marvin Field – (10) Location: 100 South Bedford Street Facilities: One lighted softball field</p> <p>Rotary Field – (11) Location: 110 South Bedford Street Facilities: One lighted softball field</p> <p>Burlington High School – (12) Location: 123 Cambridge Street Facilities: Lighted multi-purpose artificial turf field, track, two grass practice football fields</p>	<p>Marshall Simonds Middle School – (13) Location: 114 Winn Street Facilities: Lighted multi-purpose artificial turf, two grass multi-purpose fields, track, two basketball hoops</p> <p>Fox Hill School – (16) Location: 252 Fox Hill Road Facilities: One softball field, one basketball court, playground</p> <p>Pine Glen School – (17) Location: 1 Pine Glen Way / Wilmington Road (Route 62) Facilities: One grass multi-purpose field, one little league baseball field, playground</p> <p>Memorial School – (14) Location: 119 Winn Street Facilities: One grass multi-purpose field, playground</p> <p>Francis Wyman School – (18) Location: 41 Terrace Hall Avenue Facilities: One grass multi-purpose field, one major baseball field, playground</p> <p>Center for Human Services – (15) Location: 61 Center Street Facilities: One grass multi-purpose field, one major baseball field, one softball field</p> <p>Wildwood Park – (19) Location: 114-116 Bedford Street Facilities: One major baseball field, one softball field, one grass multi-purpose field, two basketball courts, playground, picnic area, walking path</p> <p>Mary P.C. Cummings Estate Burlington Recreation Area Location: 25 Blanchard Road Facilities: One grass multi-purpose field, walking trail</p> <p>MITRE Corporation Location: 142 Bedford Street / 256 Middlesex Tpk Facilities: Two little league baseball fields, one grass multipurpose field</p> <p>PARKS & RECREATION CENTER AVAILABLE TO COMMUNITY GROUPS Burlington’s Parks & Recreation at the Center for Human Services is available to community groups on a space-available basis. Facilities at the Center include meeting rooms, function rooms and a gym. There is a small fee to help cover maintenance costs. The Center is not available for private functions. For further information, please contact the Parks & Recreation Department.</p> <p>FIELD PERMITS Burlington residents and companies may reserve athletic fields on a space-available basis. There is a fee for field maintenance and improvements. Contact the Burlington Parks & Recreation Department for details.</p> <p>TENNIS COURT POLICY Tennis courts are open to Burlington residents on a first-come first-served basis. Please limit playing time to one hour if others are waiting to play.</p> <p style="text-align: right;">Updated: August, 2019</p>
--	--

Town of Burlington



Commonwealth of Massachusetts

Map



Conservation

Conservation Department
Town Hall Annex
25 Center Street
(781) 270-1655
Fax (781) 238-4667

The Conservation Commission was founded in 1966 "for the promotion and development of natural resources and for the protection of watershed resources." Today, the Conservation Commission continues this mission through the administration of the Massachusetts Wetlands Protection Act and the associated Burlington Bylaws.

Additionally, the Conservation Commission manages more than 250 acres of permanently protected open space, designated as Conservation Areas. The Conservation Commission encourages use and enjoyment of the Town's Conservation Areas and works continuously to ensure these properties are well-managed and properly maintained. For information on Conservation areas see the chart and map that follows.

Finally, the Conservation Commission promotes environmentally conscious residential, commercial, and industrial practices. Through educational outreach efforts and environmentally sensitive regulations, the Commission helps to ensure the continued health of the natural world. Some of the areas we work in are recycling and water conservation.

Trash and recycling

The most important thing that we can all do, with regards to trash and recycling, is to ensure our waste is handled properly. Proper disposal of our waste is of utmost importance to the health of our planet. Trash that ends up in our woods, meadows, and wetlands will harm wildlife and pollutes our air, water, and land. Another great way to reduce our trash burden is to compost food and yard waste. Plant-based food waste and yard waste, such as grass clippings and leaves, can be composted (naturally decomposed) and used as fertilizer for our gardens. Composting is simple; all you need to do is pile food and yard waste, turn occasionally, and let natural decomposition occur. Recycling and compost bins are available from DPW at (781) 270-1670.

Water conservation

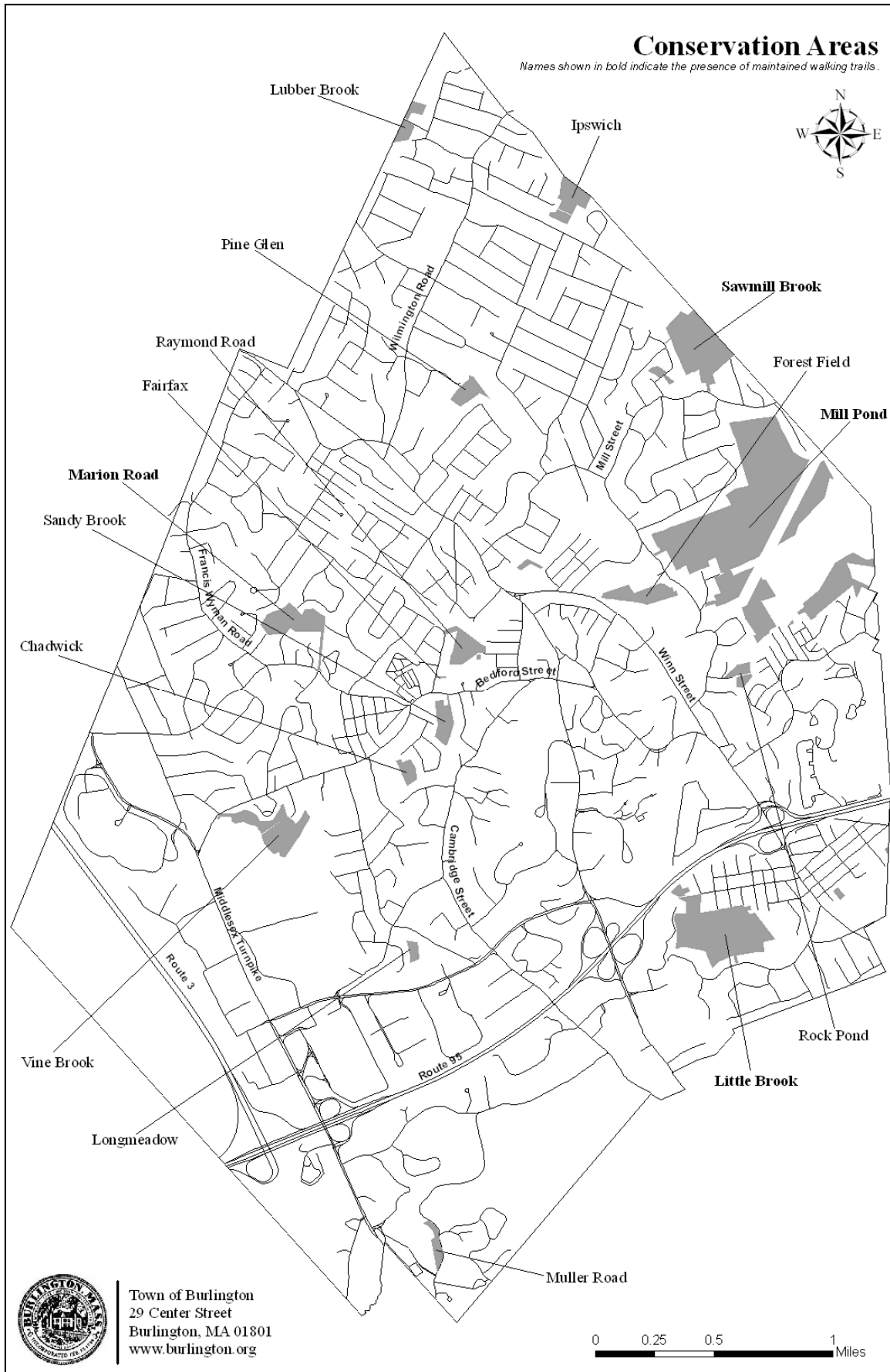
We are fortunate enough to have clean water available to us, whenever we need it, with just a touch of a faucet. The water that flows from our faucets comes from our rivers and streams. We need to be aware of our water use. Reduction of water consumption is an easy way to make a big difference. Installation of a low flow toilet will save between two and five gallons of water per flush. A low-flow showerhead can reduce your daily water consumption by three gallons per minute. For additional information check our website at www.burlington.org.

Conservation Lands

Conservation Area and Size	Access	Design
Chadwick Size: 3.78 Acres	Access is from the end of Chadwick Road.	Running brook, wetlands and woodlands. No marked trails.
Fairfax Size: Less than 1 acre	Access at end of Fairfax St	Natural resource protection
Forest Field Size: 7+ Acres	No legal access.	Mixed uplands and wetlands located along the Boston Edison power lines between Mill and Locust Streets.
Ipswich Size: 3 Acres	Access will be from the end of Kingsdale Street.	Boggy, wooded swamp including rock peak. Abuts Wilmington Conservation Land.
Little Brook Size: 36 Acres	Access from the ends of Creston and Hillside Avenues, gate off Mountain Road, Overlook Park.	2 nd largest conservation area, steep with low-lying wetlands in western portion. Beautiful upland area in central and eastern sections with many trails open to the public.
Longmeadow Brook Size: 2 Acres	Access is from Mall Road between South Bedford Street and the Longmeadow Assisted Living Facility.	Main purpose is for flood control and water quality protection.
Lubber Brook Size: 5.4 Acres	Access is from Cook Road. (very wet)	In addition to Lubber Brook, a number of small brooks and wetlands are present. Provides wildlife habitat, flood storage, and water quality protection.
Marion Road Size: 15 Acres	Access from Evergreen Ave., Marion Rd, and a gate off Bedford St. adjacent to the Pine Haven Cemetery	Several acres of uplands and a wetland system that provides flood storage and water quality enhancement. Well-used trail system and excellent diversity of native vegetation (including large shagbark hickory trees – rare in Burlington) that provide valuable wildlife habitat.
Mill Pond	Access from corner of Winter and	Surrounds the town reservoir and

Size: 140 Acres	Chestnut Streets (next to the water treatment plant), through a gate at the end of Hansen Avenue, and through a gate at the end of the offshoot from Town Line Road.	forms the largest conservation area in town. Marked and unmarked trails run throughout, which are used by joggers, walkers, and mountain bikers. This land was originally acquired to protect the reservoir watershed, which remains its primary purpose.
Muller Road Size: 3 Acres	Access is from Muller Road.	Used primarily for urban wildlife and located under high tension lines.
Pine Glen Size: 6 Acres	Access is from the Pine Glen School.	Area serves mainly to provide wildlife habitat and protect water supply. Loop trail with stream crossings.
Rock Pond Brook Size: 3 Acres	Access is from a right of way off Locust Street between Sparhawk Drive and Angela Circle.	Steep uplands and brook.
Sandy Brook Size: 5 Acres	Access is from the end of Saint Marks Road and Bedford Street.	Primarily wooded swamp along the Sandy Brook. Main functions are to protect water quality and provide flood storage.
Sawmill Brook Size: 30 Acres	Access from a gate on Mill Street, the gas line easement at Erin Lane, and from a trail starting behind Fox Hill Elementary School. Parking located at end of Sawmill Road.	3 rd largest area comprised of mostly dry woodland, wetlands and meadows. Benefits for visitors include Sawmill Brook, and several trails that run through the property. Also, directly adjacent to Clapp's Mill Site, which contains remnants of an historic mill and dam.
Vine Brook Size: 22 Acres	Access is from the end of Fowler Terrace Avenue.	The Vine Brook well field near the confluence of Vine Brook and Sandy Brook contains some of the most beautiful natural areas in Burlington. The area is not open to the general public because it is a water supply, but some groups can obtain special permission to view the site from a trestle bridge.
Mary Cummings Park	Access is from Blanchard Road	Mary Cummings is one of the great

<p>Size: 200 Acres</p>		<p>public parks of Greater Boston. This public park on the Burlington-Woburn border, which is over two hundred acres, was created when the Boston City Council accepted Mary P. C. Cummings land in 1930 to be kept forever open as a public pleasure ground. More information on this park can be found online: http://cummingspark.org/.</p>
<p>The Landlocked Forest Size: 250 Acres</p>	<p>Access is at the corner of Turning Mill Road and Mountain Road in Lexington</p>	<p>The landlocked Forest is so named because of its location between Routes 62, 3, and 128 in Burlington, and conservation land in Bedford and Lexington. The property currently offers 13 miles of maintained trails. More information, including trail maps, on this beautiful forest can be found online: http://www.landlockedforest.com/.</p>



Public Services and Utilities

Trash & Recycling

The Town provides weekly curbside trash and recycling pickup. Trash is picked up via automated trash trucks. Each home is provided with a blue 64 gallon toter for trash only. For recycling each home is provided with a green 64 gallon toter.

A new recycling program that began in 2017 is for clothing, shoes, houseware items, etc. This program uses pink bags. For more information, check out their website at simplerecycling.com or call (866) 835-5068.

Furniture, appliances and large items (appliance, TV, and/or computer monitor) pickup, is considered a bulk item and the resident must call 800-442-9006 to schedule a pick up. Bulk items are any item that cannot fit into the 64 gallon Trash Toter.

Yard waste (leaf and grass clippings) collection is scheduled each spring/fall. Tree/brush limbs no larger than 4 inches in diameter and should be cut into 3-ft. lengths and bundled. This information can be found in the Recycle Calendar that is sent out annually. It can also be found on the Town website via the Public Works page.

Construction materials are not accepted through the Towns trash pickup and must be privately contracted.

Hazardous Waste

Twice a year the Board of Health sponsors a hazardous waste collection. Residents are notified by mail of the date, time and place. The board also sponsors a mercury thermometer exchange and mercury collection program for residents.

Transportation



The MBTA (www.mbta.com) serve Burlington. Train connections are in Winchester and Woburn at the Anderson Regional Transportation Center. Bedford, Lexington and Lowell local bus lines offer services to and from the Burlington Mall. A Logan Express is located in Woburn at the Anderson Regional Transportation Center. MBTA services from various Burlington locations to Anderson Regional Transportation

Center.

There are multiple licensed taxis providing local taxi service.

Mass Bay Transportation Authority
Burlington Taxi

800-392-6100
781-272-1060

Rabies Clinic

The Board of Health sponsors its annual Rabies Clinic each spring. The event, for both dogs and cats, is held at the DPW Highway Barn on 3 Great Meadow Road. Dogs must be on leashes; cats must be in carriers. A nominal fee is charged. Owners are asked to bring in their past last rabies certificate or collar tag.

Utilities Contact Information

Utility	Phone	Web
Eversource	800-592-2000	https://www.eversource.com/
National Grid Energy	G: 800-233-5325 E: 800-322-3223	https://www.nationalgridus.com/
Water/Sewer Department (Town)	781-270-1679	
Comcast	800-934-6489	http://www.comcast.com/
RCN	800-746-4726	https://www.rcn.com/boston/
BCAT (Burlington Access Cable TV)	781-273-5922	www.bcattv.org/
Verizon	800-837-4966	https://www.verizon.com/
Dig Safe	888-344-7233 or 811	http://www.digsafe.com/

Houses of Worship

Name	Address	Phone
Anthem Church	Burlington Marriott	781-262-8308
Church of Christ	344 Cambridge St.	781-272-6430
Church of the Open Bible	3 Winn St.	781-272-0090
Fellowship Bible Church	71 Center St.	781-272-2278
Heritage Baptist Church	129 Lexington St.	781-273-1669
International Church of God	84 Cambridge St.	781-674-0123
Islamic Center of Burlington	130 Lexington St.	781-229-0336
Jehovah Witnesses	136 Winn St.	781-272-7069
Mount Hope Christian Center	3 McGinnis Drive	781-272-1014
Pinewood Lutheran Church	24 Wilmington Rd.	781-273-1610
Presbyterian Church	335 Cambridge St.	781-272-9190
Revive Church	111 Terrace Hall Ave.	877-973-8483
St. Malachy's Roman Catholic Church	99 Bedford St.	781-272-5111
St. Margaret's Roman Catholic Church	111 Winn St.	781-272-3111
St. Mark's Episcopal Church	10 St. Mark's Rd.	781-272-1586
Temple Shalom Emeth	16 Lexington St.	781-272-2351
United Church of Christ Congregational	6 Lexington St.	781-272-4547

Voter Registration and Elections

Nomination papers are available after January 1st each year from the Town Clerk Department. The Election Calendar is published in the local newspapers and is also available from the Town Clerk Department.

State/Federal elections and primaries are held in even numbered years in September and November. Presidential primaries are held every four years in March.

Absentee Voting

Voters who are unable to vote due to: 1) absence from the town during the polling hours, 2) physical disability, or 3) religious beliefs, may vote absentee. HOSPITALIZED VOTERS: Must have been admitted after noon of the 5th day before the election. Must apply themselves and designate in writing who may hand-carry the ballot to them. Applications can be made anytime; however, the ballot must be returned by the close of the poll.

Absentee ballots are available three weeks prior to every election. Your request for a ballot must be received by the Town Clerk Department by noon the day before an election.

Our Political Address

Governor:	Charlie Baker Massachusetts State House Office of the Governor Room 280 Boston, MA 02133	617-725-4005
U.S. Senators:	Edward Markey 975 John F. Kennedy Federal Bldg. Boston, MA 02203	617-565-8519
	Elizabeth Warren 2400 John F. Kennedy Federal Building Boston, MA 02203	617-565-3170
Congressman: 6th District	Seth Moulton 21 Front Street Salem, MA 01970	978-531-1669
Councilor: 3rd District	Marilyn M. Petitto Devaney 98 Westminster Avenue Watertown, MA 02472	617-725-4015 x3
State Senator: 4th Middlesex	Cindy Friedman State House, Room 413-D Boston, MA 02133	617-722-1432

**State Representative:
21st Middlesex**

Kenneth Gordon
State House, Room 146
Boston, MA 02133

617-722-2575

General Court Members:

<https://malegislature.gov/>

**Local Officials and
Town Meeting Members**

www.burlington.org

Who Do I Talk To About...101 Subjects

Animal Complaints	Animal Control Officer	781-270-1698	aco@burlington.org
Assisted Living	Burlington Housing Authority	781-272-7786	BHA@burlingtonhama.org
Birth Records	Town Clerk	781-270-1660	clerk@burlington.org
Board/Committee/Commissions	Town Clerk	781-270-1660	clerk@burlington.org
Building Permits	Building	781-270-1615	building@burlington.org
Bus Schedules - Boston	MBTA	800-392-6100	www.mbta.com
Bus Schedules - Local	B-Line	781-270-1965	burlingtonpublictransit@burlington.org
Bylaws	Town Clerk	781-270-1660	http://www.burlington.org
Cable TV - Local Access	BCAT	781-273-5922	http://www.bcattv.org/
Cable TV Complaints	Purchasing Agent	781-270-1600	
Cable TV Reception/Problems	Verizon	800-837-4966	www.verizon.com
Cable TV Reception/Problems	Comcast	800-934-6489	www.comcast.com
Cable TV Reception/Problems	RCN	800-746-4726	www.rcn.com
Car Excise Abatements	Assessor	781-270-1650	assessor@burlington.org
Car Excise Payments	Tax Collector's Office	781-270-1625	tax@burlington.org
Car Registration	Assessor	781-270-1650	assessor@burlington.org
Cemetery Plots	Cemetery Div. Of DPW	781-270-1982	dpwburlington@burlington.org
Chamber of Commerce	North Suburban	781-933-3499	www.northsuburbanchamber.com
Chamber of Commerce	Burlington Area	781-273-2523	burlingtonchamberofcommerce.org
Citizen Information	Secretary of State	617-727-7030	www.state.ma.us/sec
Civic Clubs/Organizations	Local Phone Directory		
Concerts on the Common	Recreation	781-270-1695	recreation@burlington.org
Conservation Land	Conservation	781-270-1655	conservation@burlington.org
Consumer Complaints	Atty General/Consumer Affairs	617-727-8400	www.mass.gov/ago
Corporations	Sec. of Commonwealth	617-727-9640	www.sec.state.ma.us/COR/coridx.h
Counseling Services	Burlington Youth & Family Services	781-270-1961	byfs@burlington.org
CPR Classes	Fire	781-270-1925	fire@burlington.org
Curb Cuts	Engineering	781-270-1640	engineering@burlington.org
Day Care Centers	State Office of Children's Services	617-988-6600	www.mass.gov
Dead Animals	Police/Animal Control Officer	781-270-1914	police@bpd.org or aco@bpd.org
Death Records	Town Clerk	781-270-1660	clerk@burlington.org
Disability Access/Issues	Veteran's Director	781-270-1959	veterans@burlington.org
Divorce Records	Probate Court (Middlesex)	617-768-5800	www.mass.gov
Dog License	Town Clerk	781-270-1660	clerk@burlington.org
Employment Opportunities	Human Resources	781-505-1160	hr@burlington.org
Field Permits	Recreation	781-270-1695	recreation@burlington.org
Fire Prevention/Inspection Services	Fire	781-270-1925	fireprevention@burlington.org
Fishing Permits - Reservoir	Recreation	781-270-1695	recreation@burlington.org
Fishing/Hunting Licenses	Secretary of the Commonwealth	888-773-8450	www://www.mass.gov/eea
Flu Shots	Board of Health - Nurse	781-270-1955	boh@burlington.org
Food Pantry	People Helping People	781-270-6625	www.peoplehelpingpeopleinc.com
Food Stamps	Dept. Transitional Assistance	877-382-2363	www.mass.gov
Found Dogs	Town Clerk AM/Police PM	781-270-1660	clerk@burlington.org
Fuel Assistance	Veteran's Director	978-459-6161	veterans@burlington.org
Gas Company	National Grid	800-233-5325	https://www.nationalgrid.com
Genealogy Research	Archives	781-270-1604	archives@burlington.org
Hazardous Waste	Board of Health	781-270-1955	health@burlington.org

Health Issues	Board of Health	781-270-1955	health@burlington.org
Home Business (DBA) License	Town Clerk	781-270-1660	clerk@burlington.org
Home Improvements/Additions	Building	781-270-1615	building@burlington.org
Homestead Applications	Town Clerk	781-270-1660	clerk@burlington.org
Housing Court	Northeast Housing Court	978-689-7833	www.mass.gov
Housing for Elderly/Disabled	Burlington Housing Authority	781-272-7786	bha.ma@comcast.net
Labor Laws	Div. Of Fair Labor/Business	617-727-3465	www.mass.gov
Leash Law	Animal Control Officer	781-270-1698	aco@burlington.org
Legal Aid	Mass. Bar Association	617-338-0610	masslawhelp.com
Library Services	Library	781-270-1690	www.burlingtonpubliclibrary.org
Lost Pets	Animal Control Officer	781-270-1698	aco@bpd.org
Marriage License/Records	Town Clerk	781-270-1660	clerk@burlington.org
Meeting Room Bookings	Selectmen	781-270-1600	selectmen@burlington.org
Meeting Schedules	Town Clerk	781-270-1660	clerk@burlington.org
Mosquito Spraying	Board of Health	781-270-1955	health@burlington.org
Movie Schedule-Town Common	Recreation	781-270-1695	recreation@burlington.org
Noise Complaints - Commercial	Building	781-270-1615	building@burlington.org
Noise Complaints - Residential	Police	781-270-1914	police@bpd.org
Notary Public Services	Town Clerk	781-270-1660	clerk@burlington.org
Parking of Commercial Vehicles	Building	781-270-1615	building@burlington.org
Parking Tickets	Tax Collector's Office	781-270-1625	tax@burlington.org
Parks and Playgrounds	Recreation	781-270-1695	recreation@burlington.org
Passports/Passport Photos	Post Office	781-270-4449	www.usps.com
Pay Town Related Bills, Fees, etc.	Tax Collector's Office/On-Line	781-270-1625	tax.burlington.org
Phone Book (Local)	B & D Advertising Agency	781-779-1344	
Plot Plans	Building	781-270-1615	building@burlington.org
Post Office Hours	Post Office	781-270-4449	www.usps.com
Pot Hole Damage Claims	Accounting/Selectmen	781-270-1600	
Pot Hole Reporting	Highway Div. Of DPW	781-270-1676	dpwburlington@burlington.org
Power Outages	Eversource	800-592-2000	www.eversource.com
Property Boundary Issues	Engineering Div. Of DPW	781-270-1640	engineering@burlington.org
Property Values	Assessor	781-270-1650	assessor@burlington.org
Public Assistance			
	Office of Human Health Services	617-573-1600	www.mass.gov
	Department of Transitional Assistance	877-382-2363	www.mass.gov
Public Meetings	Town Clerk	781-270-1660	clerk@burlington.org
Public Records	Town Clerk/Archives	781-270-1660	clerk@burlington.org
Recreation Activities	Recreation	781-270-1695	recreation@burlington.org
Recycling Dates/Supplies	DPW	781-270-1670	dpwburlington@burlington.org
Rent-A-Kid	Youth and Family Services	781-270-1961	byfs@burlington.org
School Enrollment	School Administration	781-270-1800	studentinfo@bpsk12.org
Senior Citizen Information	Council on Aging	781-270-1950	coa@burlington.org
Sewer Issues	DPW	781-270-1670	dpwburlington@burlington.org
Smoke Detector Inspections	Fire	781-270-1925	fire@burlington.org
Social Security	Social Security Administration	800-772-1213	www.ssa.gov
Sports Organizations/Associations	Recreation	781-270-1695	recreation@burlington.org
Street Cleaning/Plowing	Highway Div. Of DPW	781-270-1676	dpwburlington@burlington.org
Street Construction/Opening Issues	Engineering Div. Of DPW	781-270-1640	engineering@burlington.org
Street Lights - Report Out	Town Engineering	781-270-1640	engineering@burlington.org
Tax Payments	Tax Collector's Office/On-Line	781-270-1625	tax@burlington.org
Taxes - Vehicle Excise	Assessor	781-270-1650	assessor@burlington.org
Temporary Food Permits	Board of Health	781-270-1955	health@burlington.org
Tenant Rights	Attorney General	617-727-8400	www.mass.gov/ago
Town Common Events	Recreation	781-270-1695	recreation@burlington.org
Town Common Gazebo Reservation	Selectmen	781-270-1600	selectmen@burlington.org
Town Officials Listing	Town Clerk	781-270-1660	www.burlington.org/clerk
Traffic Lights	Engineering Div. Of DPW	781-270-1640	engineering@burlington.org
Trash (Pick-up appliances)	Republic Services	800-442-9006	www.republicservices.com
Trash (Pick-up bulk items)	Republic Services	800-442-9006	www.republicservices.com
Trash Issues	DPW	781-270-1670	dpwburlington@burlington.org
Trees (Downed - no hazard)	DPW Highway	781-270-1676	dpwburlington@burlington.org
Trees (Downed - safety hazard)	Fire	781-270-1925	fire@burlington.org
Unemployment Compensation	Mass. Div. of Employment	617-626-6800	www.mass.gov

Variance Applications	Town Clerk	781-270-1660	clerk@burlington.org
Variance Questions	Board of Appeals	781-505-1150	boa@burlington.org
Veteran's	Veteran's Director	781-270-1959	veterans@burlington.org
Visiting Nurses	Visiting Nurses Association of N.E.	508-480-0060	www.vnane.org
Volunteer Opportunities	Town Administrator	781-270-1600	selectmen@burlington.org
Water & Sewer Payments	Tax Collector's Office	781-270-1625	tax@burlington.org
Water Billing	DPW	781-270-1675	dpwburlington@burlington.org
Water Issues	DPW	781-270-1670	dpwburlington@burlington.org
Wetlands	Conservation	781-270-1655	conservation@burlington.org
Wires (Downed)	Fire	781-270-1925	fire@burlington.org
Working Papers	School Administration	781-270-1800	https://pupilservices.wordpress.com/work-permit/
Zoning Issues	Planning Board	781-270-1645	building@burlington.org

Appendix

Town Administrator Committee Application

http://www.burlington.org/town_government/docs/CommitteeApp.pdf

Mail-In Voter Registration Form

<https://www.sec.state.ma.us/ele/elepdf/Voter-reg-mail-in.pdf>

Town Map

http://www.burlington.org/community_development/maps.php

Water Quality Report

<http://www.burlington.org/2018%20Burlington%20CCR%20Water%20Quality%20Report.pdf>